

PALMETTO

MANATEE (48X) 7 NE UTC-5(-4DT) N27°38.56' W82°31.20'

MIAMI

27 NOTAM FILE PIE

RWY 07-25: 3120X100 (TURF) LIRL

RWY 07: Trees. Rgt tfc.

SERVICE: S2 FUEL 100LL LGT LIRL Rwy 07-25 avbl by phone request 941-722-9296.

AIRPORT REMARKS: Attended Mon-Fri 1400-2200Z, Sat 1400-1700Z. Birds, wildlife and deer on and invof arpt. Fuel avbl daily SR-SS. Call AMGR for after hrs svc and check rwy conditions 941-722-9296. Arpt clsd to turbine hops inclg hover and practice maneuvers at NE field adj to Rwy 07-25 exc Bell Jet Rangers, emerg. Call in advn 941-722-9296. Rwy 07-25 first 500 ft east end soft after heavy seasonal rains. Rwy 07-25 thlds mkd by 3 green lgts and 1 bucket on each side of rwy. Rwy 07 and 25 edges marked by pails on each side of rwy.

AIRPORT MANAGER: 941-722-9296

COMMUNICATIONS: CTAF 122.9

CLEARANCE DELIVERY PHONE: For CD ctc Tampa Apch at 813-878-2528

PANACEA

WAKULLA CO (2J0) 3 S UTC-5(-4DT) N29°59.37' W84°23.72'

JACKSONVILLE

11 NOTAM FILE GNV

RWY 18-36: 2590X70 (TURF)

RWY 18: Thld dspcd 200'. Road.

RWY 36: Thld dspcd 375'. Trees.

SERVICE: LGT Lgts OTS.

AIRPORT REMARKS: Unattended. Ground access by prior req 850-321-0373. Parachute Jumping. 50' trees west side of rwy 100' from cntrln. Trees 100'-125' west of Rwy 18-36. AER 36 has 10'-25' trees and 5' fence. Trees, bldgs, windsock poles, lightning detection system, berms and utility poles 75'-125' east of Rwy 18-36. Rwy 18-36 len and wid and dspcd thlds mkd with W PVC pipes tires. Rwy 18-36 soft turf.

AIRPORT MANAGER: 850-321-0373

COMMUNICATIONS: CTAF 122.9

CLEARANCE DELIVERY PHONE: For CD ctc Tallahassee Apch at 850-942-8311, when Apch clsd ctc Jacksonville ARTCC at 904-845-1592.

PANAMA CITY

NORTHWEST FLORIDA BEACHES INTL (ECP)(KECP) 16 NW UTC-6(-5DT) N30°21.49'

NEW ORLEANS

W85°47.74'

H-8G, L-21C, 22I

69 B Class I, ARFF Index C NOTAM FILE ECP

IAP, AD

RWY 16-34: H1000X150 (CONC-GRVD) S-100, D-155, 2D-400,

2D/2D2-750 PCR 690 R/B/W/T HIRL CL

RWY 16: MALSR, TDZL, PAPI(P4L)—GA 3.0° TCH 72'. RVR-TR Trees.

RWY 34: REIL, PAPI(P4L)—GA 3.0° TCH 86'. RVR-TR Trees.

SERVICE: FUEL 100LL, JET A LGT When ATCT clsd, ACTVT MALSR Rwy 16; REIL Rwy 34; TDZ Rwy 16; cntln Rwy 16-34; PAPI Rwy 16 and 34; HIRL Rwy 16-34—CTAF.

AIRPORT REMARKS: Attended continuously. Birds on and invof arpt. Twy J btn Twy D and Taxilane F clsd to acft with wingspan gtr than 80 ft exc 1 hr PPR—850-769-6033. Twy K, M, E2, E3 btn Twy D and Taxilane F rstrd to acft with wingspan gtr than 80 ft. Mil VIP arr/dep shall be at arpt term with prior apvl fm arpt auth—850-763-6751 ext 306.

AIRPORT MANAGER: 850-763-6751

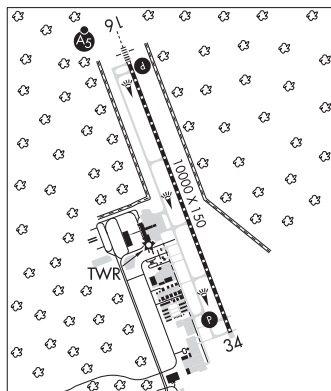
WEATHER DATA SOURCES: ASOS 119.975 (850) 235-7857. LAWRS.

COMMUNICATIONS: CTAF 118.95 ATIS 119.975

Ⓡ **TYNDALL APP/DEP CON** 125.2 (Abv 5000') (1100-2300Z Mon-Thu, 1100-2300Z Fri, clsd weekends, hol, and ACC down days).

Ⓡ **JACKSONVILLE CENTER APP/DEP CON** 120.825

TOWER 118.95 (1200-0400Z) **GND CON** 121.65 **CLNC DEL** 123.75



CONTINUED ON NEXT PAGE

CONTINUED FROM PRECEDING PAGE

AIRSPACE: CLASS D svc 1200–0400Z†; other times CLASS G.

RADIO AIDS TO NAVIGATION: NOTAM FILE MAI.

MARIANNA (L) (L) VORTACW 114.0 MAI Chan 87 N30°47.17' W85°07.47' 234° 43.2 NM to fld. 128/OE.

TAC AZM unusable:

261°–276° byd 25 NM blo 3,000'

346°–061° byd 30 NM blo 2,000'

DME unusable:

261°–276° byd 25 NM blo 3,000'

346°–061° byd 30 NM blo 2,000'

VOR unusable:

209°–347° byd 40 NM

261°–276° byd 25 NM blo 3,000'

316°–326° byd 20 NM blo 12,500'

346°–061° byd 30 NM blo 2,000'

ILS/DME 111.15 I-PUK Chan 48(Y) Rwy 16. Class IIE.

PATRICK SPACE FORCE BASE (COF)(KCOF) AF 3 S UTC–5(–4DT) N28°14.10' W80°36.60' **JACKSONVILLE**

8 B TPA—See Remarks NOTAM FILE PIE Not insp.

RWY 03–21: H9008X200 (ASPH–CONC–GRVD) PCN 45 R/C/W/T HIRL

RWY 03: ALSF1. PAPI(P4L)—GA 3.0° TCH 52'.

RWY 21: PAPI(P4L)—GA 3.0° TCH 52'.

RWY 11–29: H3993X200 (ASPH) PCN 51 F/B/W/T MIRL

RWY 11: PAPI(P4L)—GA 3.0° TCH 51'.

RWY 29: PAPI(P4L)—GA 3.0° TCH 50'. Thld dspcld 301'.

SERVICE: **FUEL** JET A++ **OX** 1, 2 **MILITARY—LGT** Twy A edge lgt btn Twy B and L aprx 17'–78' fm usbl twy scf. Comd Post does not have ability to ACVT afld lgt aft afld hr. Rwy 21 non–std thr lgt. Airfield lgts–out ops may be in prog on non–infc basis with non–ptcpg acft. Rwy 03 PAPI unusbl byd 7 deg left and 9 deg right of cntrln. **FUEL** A++ , B+ , A+ . Opr Mon–Fri 1130–0330Z†, On call (1 hr response) Sat–Sun and hol. Ltd fuel cpblty avbl for tran acft due to const of fuels storage area—C321–494–5535/DSN 854–5535/1365. **FLUID** SP PRESAIR LHGX LOX **OIL** 0–128–133–148 **TRAN ALERT** Ops 1300–0500Z† Mon–Fri; clsd hol. All tran arr or dep rqr Tran Alert Asst; no arr after 0430Z†. Req for svcs outside nml hr must be forwarded thru afld mgmt NLT 10 work days in adv. Chip detection inspection rqr by F–16 not avbl. Hvy acft must provide their own tow bar. Fleet svc unavbl; lav cart avbl upon req for aircrew use.

NOISE: Noise abatement info—airfield ops DSN 854–2222/C321–494–2222.

MILITARY REMARKS: Attended 1300–0500Z† Mon–Fri, clsd Sat–Sun and hol. Clsd every third Fri of month. **RSTD** Acft lgrtr than C–130, NA on 800 Ramp, and 180° turns on Rwy 03–21 ltd to conc ends. Acft turns on Rwy 03–21 rstd to conc ends exc for C–130 and smaller. Min 48 hr ntc rqr and no more than 7 days prior. E side of Twy C clsd to jet acft and acft with wingspan abv 133 ft. Gun berm ltd to A–10 acft or smlr and reqs afld mgmt coordination. Twy J west of gun berm clsd. Acft with 188' wingspan and smaller only on Twy A btn 800 Ramp and Rwy 29. Rwy 29 ovrn unusbl. Skid ldg conducted by base asgn R/W acft equipped with skids rstd to Twy B S of Twy C and Rwy 11–29 W of Rwy 03. C–130 and smaller acft only at 800 ramp and int of Twy M and Rwy 11. Twy A between Twy L and Rwy 21 undern rstd to C–130 acft. Offl bus–72 hrs ntc rqr for PPR—ctc AMOPS at DSN 854–2222/2223. PPR valid +/- 30 min fr ETA. 301 RQS cargo sling load area lctd 630' S of COF TACAN and 1140' W of Rwy 21 cntrln. Apv on non–interference basis bt ATC. Over flt of Manatee Cove Campground NA. 301 RQS cargo sling load area lctd at grassy area NW of apch end Rwy 11 along Banana River shoreline N28 14 38, W 80 36 57 is auth for use by 920 RQW HH–60 acft. Coor with afld mgmt rqr prior to use. When conducting cargo sling load ops, ovft of pers, veh, nd prk acft not auth. Non std safety circle mrk lcd on 750 ramp. **CAUTION** First 240' Rwy 29 not vis fm twr. Dur VFR wx cond exer caution due to extv lcl gen avn acft ovr Melbourne Intl 7 NM S. Bird haz potential exists. Migratory Season Phase II 1 Oct–31 Mar. Dur bird watch cond moderate tkof and ldg pmtd; dur lrd watch cond severe tkof and ldg na. Ctc Twr/Gnd/ATIS for current bird watch cond code. Rwy 11–29 nonstandard L2 touchdown box markings. Rwy 11–29 both std and assault ldg zone markings. ARFF avbl 4800 gals of agent with 7 ARFF veh. ARFF avbl 4800 gal of agent with 4 ARFF veh. **TFC PAT** TPA—1500' MSL rectangular, 2000' MSL overhead. Tran acft pat work not auth fm 0300–1300Z† (2200–0800 lcl). **CSTMS/AG/IMG** Cstms ltd to tran msn in drct support of SLD 45 and 920 RQW only. All acft rrgq customs support ctc AMOPS 72 hrs prior with PPR. req. If no ntc, exp 2–3 hr delay. All acft rqr support ctc PTD with 30 min out call via direct A/G com or fone patch. **MISC** AMOPS DSN 854–2222; C321–494–2222; fax C321–494–6442. Base tran only avbl Mon–Fri 1200–2100Z†, clsd weekend. Pax terminal avbl Mon 1100–1900Z†, Wed 1230–2130Z† and Tue, Thurs, and Fri 1430–2300Z†. Obsn automated; FMQ–19 obsn wx expmt in use H24. Wx obsn/fcst avbl H24—DSN 467–8484; C321–853–8484. Backup support ctc 26 OWS at C318–529–2651. COMSEC stor not avbl at AMOPS; ctc Comd Post (blgd 423, extn 7001) for COMSEC stor. Nstd ovrn len Rwy 03; ovrn 1100'. Nstd chevron mrk exist. Missing chevron at int of Twys A and G. Rwy 03–21 first 1000 ft grooved conc; mid 7000 ft apshalt.

AIRPORT MANAGER: 321-494-4028

CONTINUED ON NEXT PAGE