

APP CRS <b>088°</b>	Rwy Ldg TDZE Apt Elev	<b>N/A</b> <b>N/A</b> <b>907</b>
------------------------	-----------------------------	--

# RNAV (GPS)-A

EAGLE (EAA) (PAEG)

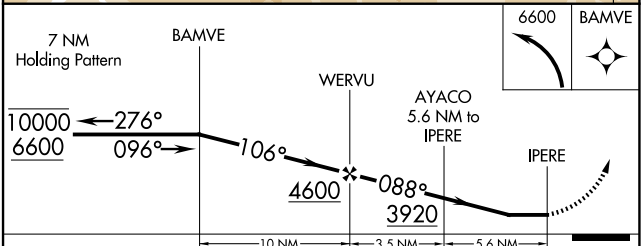
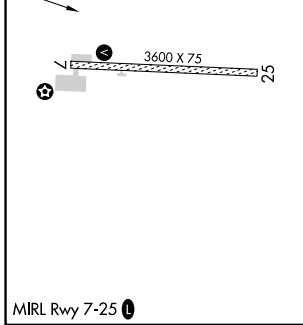
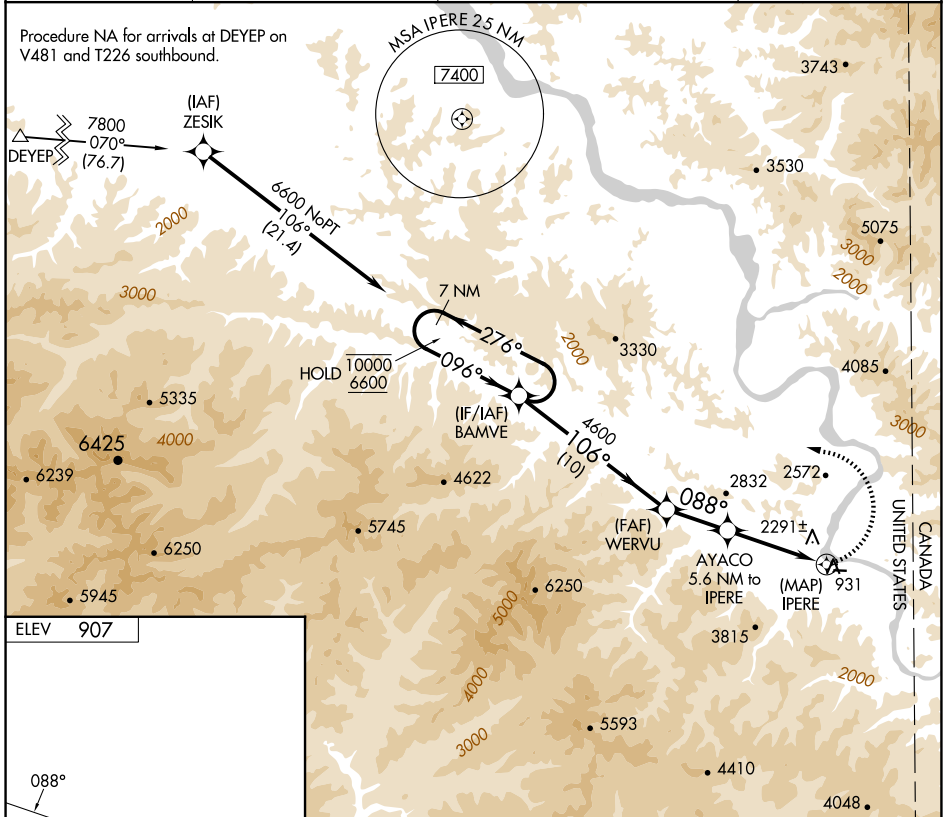
RNP APCH.

**⚠** Circling NA north of Rwy 7-25. Procedure NA at night.  
When local altimeter setting not received, procedure NA.

**❄** -12°C

MISSED APPROACH: (Do not exceed 210K until BAMVE) Climbing left turn to 6600 direct BAMVE and hold, continue climb-in-hold to 6600.

ASOS <b>135.55</b>	ANCHORAGE CENTER <b>135.3 322.5</b>	NORTHWAY RADIO <b>122.3</b>	UNICOM <b>122.8 (CTAF)</b> <b>📻</b>
-----------------------	--	--------------------------------	--



CATEGORY	A	B	C	D
CIRCLING	2720-1¼ 1813 (1900-1¼)	2720-1½ 1813 (1900-1½)	3020-3 2113 (2200-3)	NA

AK, 22 JAN 2026 to 19 MAR 2026

AK, 22 JAN 2026 to 19 MAR 2026