

(LLADN1.LLADN) 17341

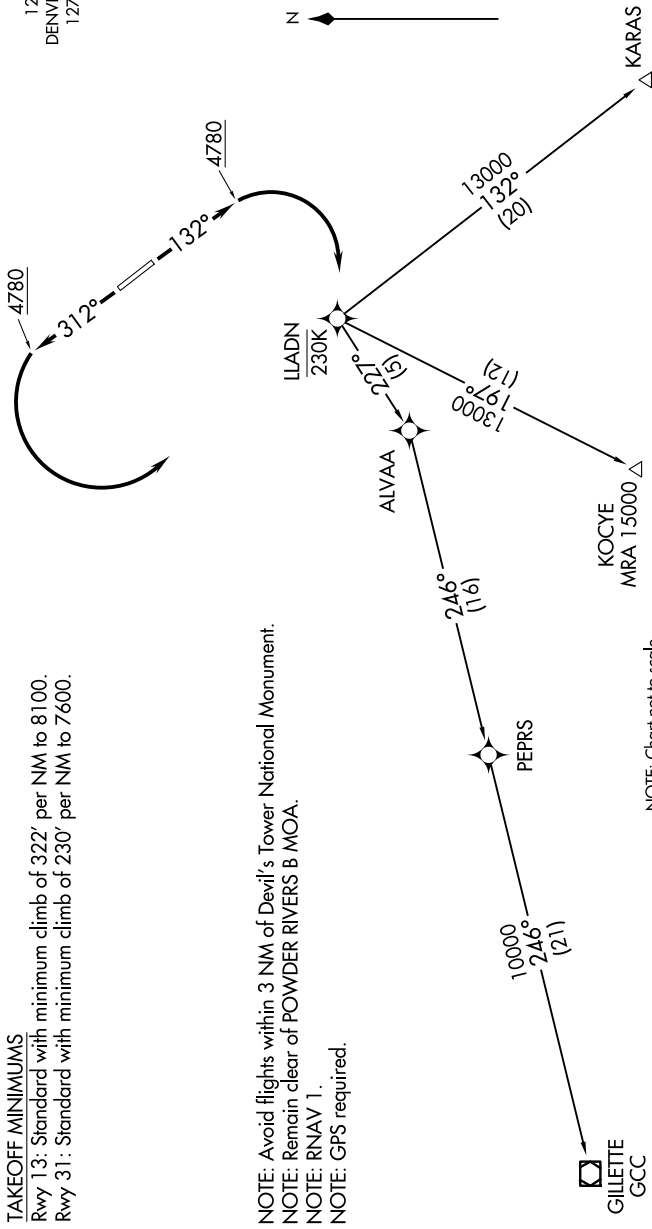
LLADN ONE DEPARTURE (RNAV)

AL-10288 (FAA)

HULETT MUNI (W43)
HULETT, WYOMING

NW-1, 19 FEB 2026 to 19 MAR 2026

UNICOM
122.8 (CTAF)
DENVER CENTER
127.95 338.2



TAKEOFF MINIMUMS
 Rwy 13: Standard with minimum climb of 322' per NM to 8100.
 Rwy 31: Standard with minimum climb of 230' per NM to 7600.

NOTE: Avoid flights within 3 NM of Devil's Tower National Monument.
NOTE: Remain clear of POWDER RIVERS B MOA.
NOTE: RNAV 1.
NOTE: GPS required.

NOTE: Chart not to scale.

DEPARTURE ROUTE DESCRIPTION

TAKEOFF RUNWAY 13: Climb heading 132° to 4780, then right turn direct LLADN, cross LLADN at/below 230K. Thence
TAKEOFF RUNWAY 31: Climb heading 312° to 4780, then left turn direct LLADN, cross LLADN at/below 230K. Thence
 Expect further clearance to filed altitude 10 minutes after departure.

LOST COMMUNICATIONS: Alternate frequency 135.6 / 363.025.

- GILLETTE TRANSITION (LLADN1.GCC)
- KARAS TRANSITION (LLADN1.KARAS)
- KOCYE TRANSITION (LLADN1.KOCYE)

NW-1, 19 FEB 2026 to 19 MAR 2026

LLADN ONE DEPARTURE (RNAV)

(LLADN1.LLADN) 03APR14

HULETT, WYOMING
HULETT MUNI (W43)