

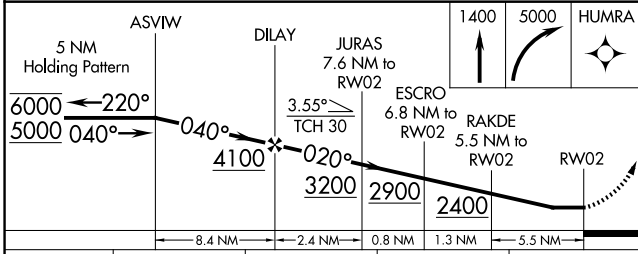
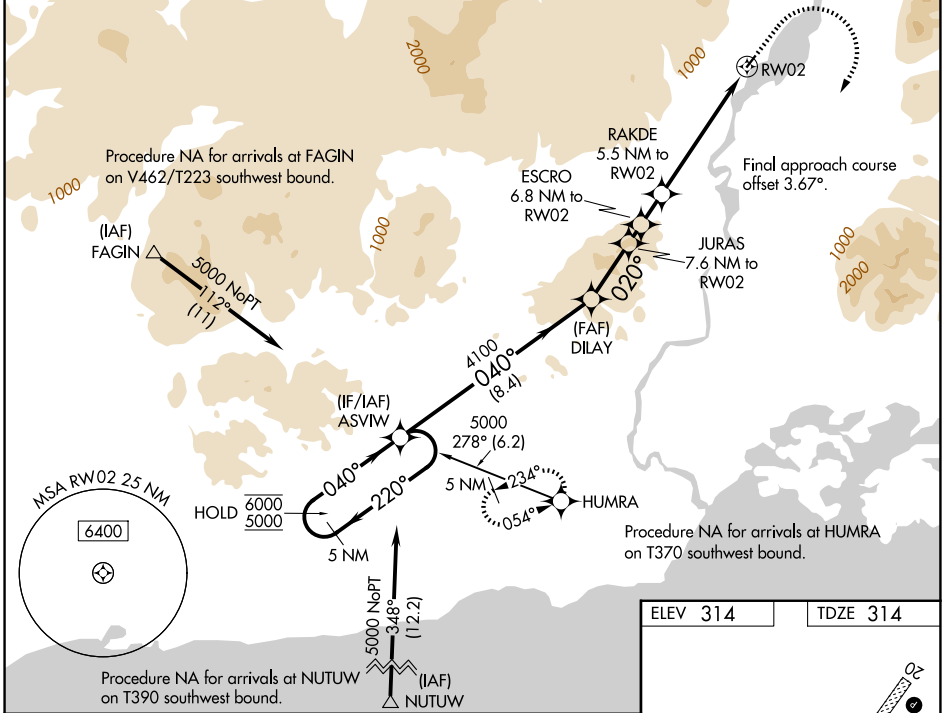
APP CRS	Rwy Ldg	2800
020°	TDZE	314
	Apt Elev	314

RNAV (GPS) RWY 2

NONDALTON (5NN) (PANO)

<p>RNP APCH - GPS.</p> <p>⚠ Rwy 2 helicopter visibility reduction below 1 SM NA.</p> <p>⚡ -29°C Circling NA west of Rwy 2-20. Straight-In Rwy 2 NA at night, Circling Rwy 2 NA at night. Use Iliamna altimeter setting: when not received, procedure NA.</p>	<p>MISSED APPROACH: Climb to 1400 then climbing right turn to 5000 direct HUMRA and hold, continue climb-in-hold to 5000.</p> <p>*Missed approach requires minimum climb of 216 feet per NM to 3100.</p>
--	--

<p>III/PAIL ASOS</p> <p>134.95</p>	<p>ANCHORAGE CENTER</p> <p>118.8</p>	<p>KENAI RADIO</p> <p>122.2</p>	<p>CTAF</p> <p>122.9</p>
---	---	--	---------------------------------



ELEV 314	TDZE 314
----------	----------

The diagram shows RWY 2 with a 2800 Y75 (yellow 75-foot lighting) and a REIL (Red Edge Light) for RWY 2 and RWY 20. A MIRL (Medium Intensity Runway Light) is shown for RWY 2-20. The RWY 2 heading is 020°. A missed approach arrow points to 1400ft, and a climb-in-hold arrow points to 5000ft.

CATEGORY	A	B	C	D
LNAV MDA*	1380-1¼ 1066 (1100-1¼)	1380-1½ 1066 (1100-1½)		NA
LNAV MDA	1660-1¼ 1346 (1400-1¼)	1660-1½ 1346 (1400-1½)		NA
CIRCLING	1660-1¼ 1346 (1400-1¼)	1660-1½ 1346 (1400-1½)		NA

AK, 22 JAN 2026 to 19 MAR 2026

AK, 22 JAN 2026 to 19 MAR 2026