

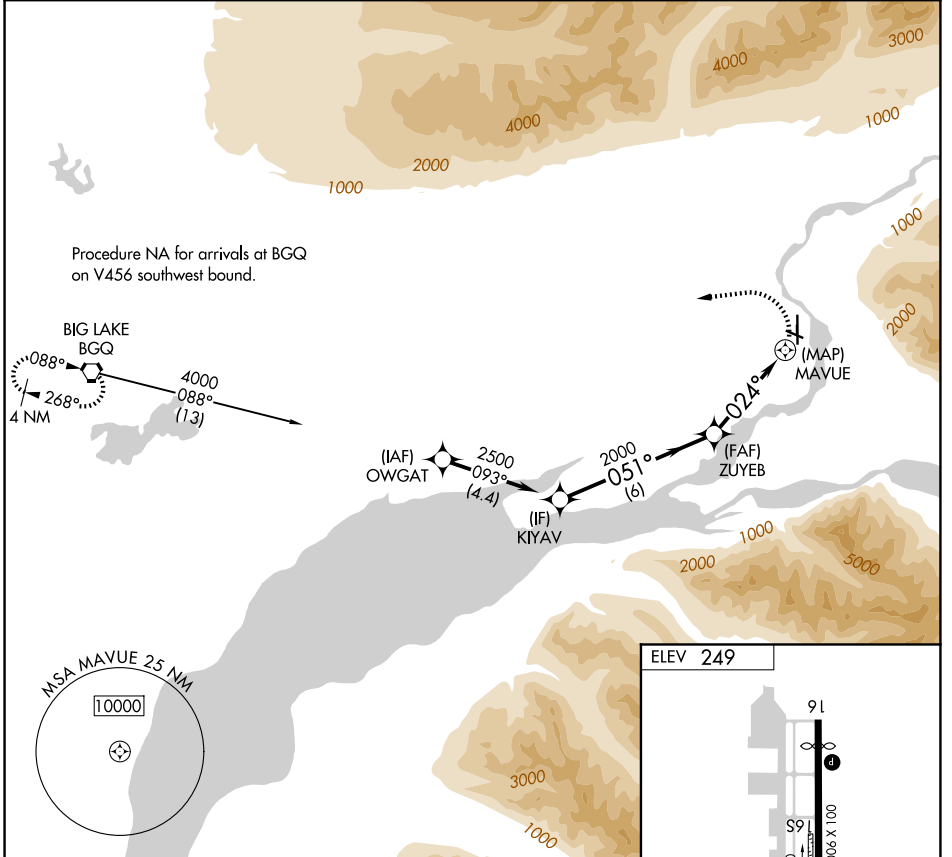
APP CRS 024°	Rwy Ldg TDZE Apt Elev	N/A N/A 249
------------------------	-----------------------------	--

RNAV (GPS)-A

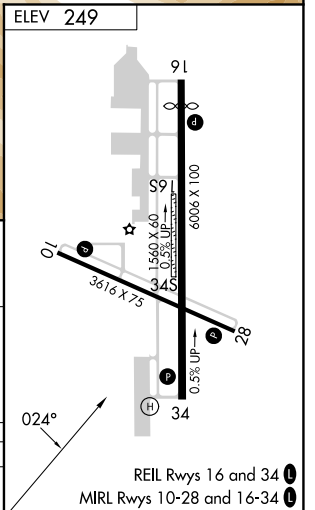
WARREN "BUD" WOODS PALMER MUNI (PAQ) (PAAQ)

RNP APCH.	MISSED APPROACH: Climbing left turn to 4500 direct BGQ VORTAC and hold.
<p>▼ Circling NA northeast of Rwy 16-28. ▲ Procedure NA at night.</p>	

AFIS 134.75	ANCHORAGE APP CON 118.6 290.5	PALMER RADIO 123.6 (CTAF) 122.4
-----------------------	---	---



	KİYAV	ZUYEB	MAVUE	BGQ
	2500	2000	2024°	4500
	051°		024°	
	6 NM		3.9 NM	
CATEGORY	A	B	C	D
CIRCLING	860-1¼ 611 (700-1¼)	940-1¼ 691 (700-1¼)	1300-3	1051 (1100-3)



AK, 22 JAN 2026 to 19 MAR 2026

AK, 22 JAN 2026 to 19 MAR 2026

RNAV (GPS)-A