

|  |                        |   |
|--|------------------------|---|
| WAAS<br>CH <b>90225</b><br><b>W05A</b> | APP CRS<br><b>048°</b> | Rwy Idg <b>4589</b><br>TDZE <b>45</b><br>Apt Elev <b>45</b> |
|--|------------------------|---|

# RNAV (GPS) RWY 5

NUIQSUT (AQT) (PAQT)

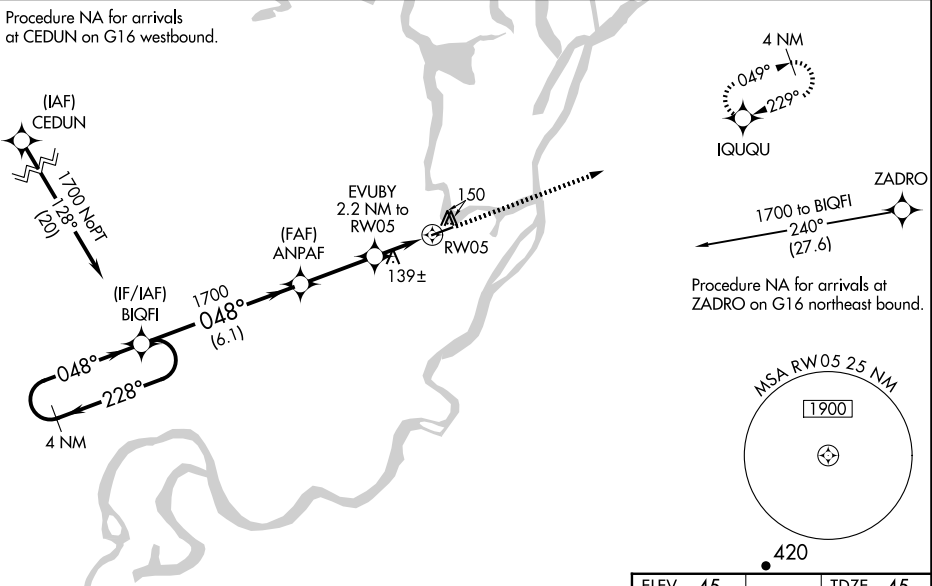
**⚠** Inoperative table does not apply. For uncompensated Baro-VNAV systems, LNAV/VNAV NA below -25°C (-13°F) or above 54°C (130°F). DME/DME RNP-0.3 NA. When local altimeter setting not received, use Deadhorse altimeter setting and increase all DA 123 feet and all MDA 140 feet, increase LPV all Cats, LNAV/VNAV all Cats, and Circling Cat C visibility ¼ mile, increase LNAV Cat C visibility ½ mile. VDP and Baro-VNAV NA with Deadhorse altimeter setting.

MALSF

MISSED APPROACH: Climb to 1700 direct IQUQU and hold.

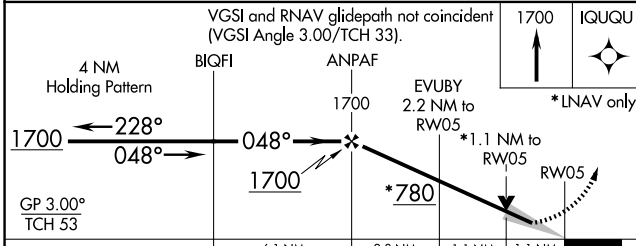
|                       |                                  |                                 |                      |
|-----------------------|----------------------------------|---------------------------------|----------------------|
| ASOS<br><b>135.35</b> | ANCHORAGE CENTER<br><b>119.4</b> | DEADHORSE RADIO<br><b>122.5</b> | CTAF<br><b>122.8</b> |
|-----------------------|----------------------------------|---------------------------------|----------------------|

Procedure NA for arrivals at CEDUN on G16 westbound.



AK, 22 JAN 2026 to 19 MAR 2026

AK, 22 JAN 2026 to 19 MAR 2026



| CATEGORY     | A                 | B                 | C                   | D  |
|--------------|-------------------|-------------------|---------------------|----|
| LPV DA       |                   | 295-1 250 (300-1) |                     | NA |
| LNAV/VNAV DA |                   | 295-1 250 (300-1) |                     | NA |
| LNAV MDA     | 440-1 395 (400-1) |                   | 440-1½ 395 (400-1½) | NA |
| CIRCLING     | 520-1 475 (500-1) |                   | 520-1½ 475 (500-1½) | NA |

ELEV 45 TDZE 45

MIRL Rwy 5-23

REIL Rwy 23