

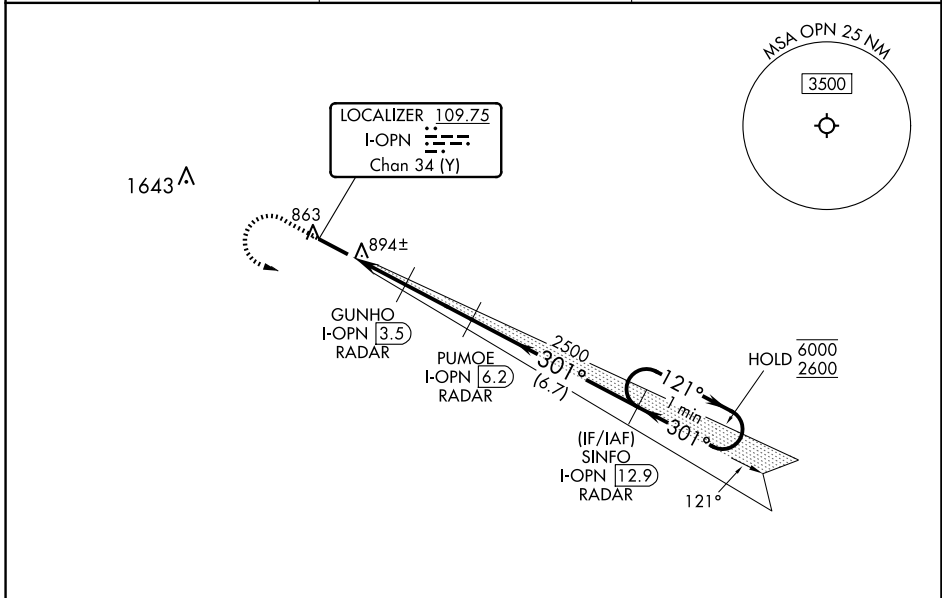
LOC/DME I-OPN 109.75 Chan 34 (Y)	APP CRS 301°	Rwy Idg 4962 TDZE 796 Apt Elev 798
---	------------------------	---

ILS or LOC RWY 30

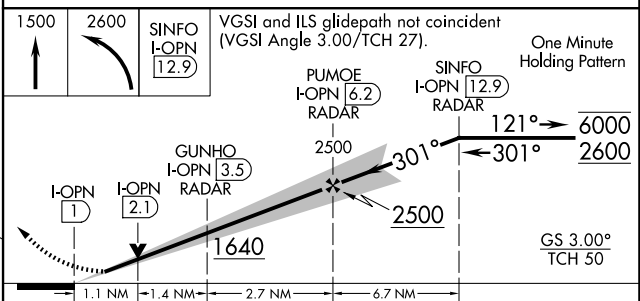
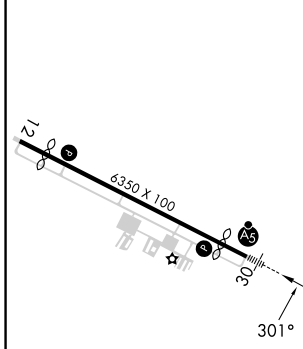
THOMASTON-UPSON COUNTY (OPN)

RNP APCH - GPS.	MALSRL 	MISSED APPROACH: Climb to 1500 then climbing left turn to 2600 direct SINFO and hold.
DME or RADAR required.		
For inop ALS, increase S-LOC 30 Cats C, D visibility to 1 SM.		

AWOS-3 133.975	ATLANTA APP CON * 124.2 279.6	UNICOM 122.8 (CTAF) 0
--------------------------	---	---------------------------------



ELEV 798	D	TDZE 796
----------	----------	----------



CATEGORY	A	B	C	D
S-ILS 30		1016-1/2	220 (300-1/2)	
S-LOC 30	1160-1/2	364 (400-1/2)	1160-5/8	364 (400-5/8)
CIRCLING	1240-1 442 (500-1)	1260-1 462 (500-1)	1260-1 1/2 462 (500-1 1/2)	1680-3 882 (900-3)

MIRL Rwy 12-30 0

FAF to MAP 5.2 NM

Knots	60	90	120	150	180
Min:Sec	5:12	3:28	2:36	2:05	1:44

SE-4, 19 FEB 2026 to 19 MAR 2026

SE-4, 19 FEB 2026 to 19 MAR 2026