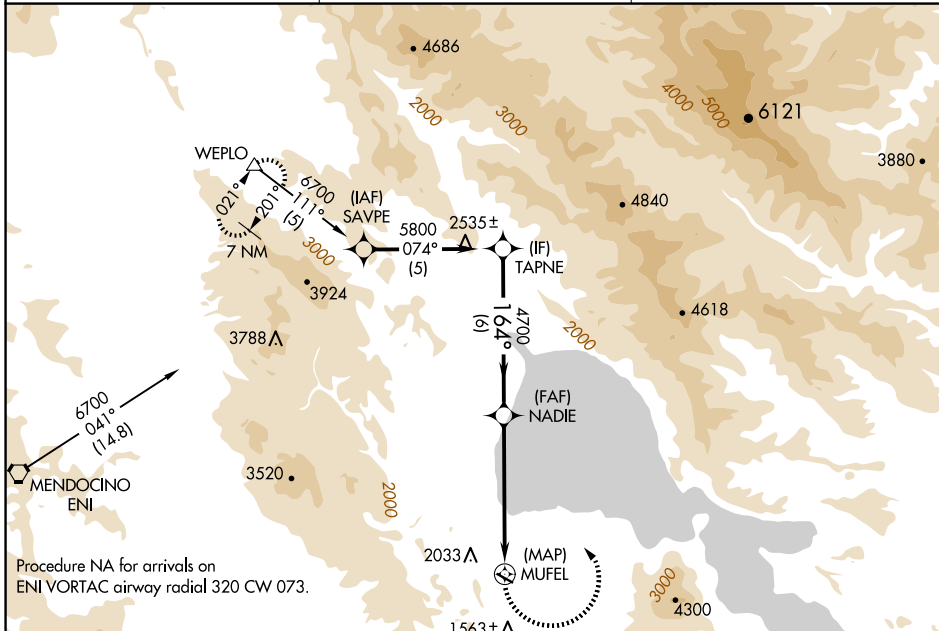


| | | |
|------------------------|-----------------------------|---|
| APP CRS 164° | Rwy Idg TDZE Apt Elev | N/A N/A 1380 |
|------------------------|-----------------------------|---|

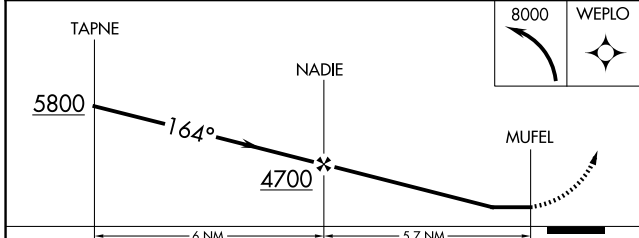
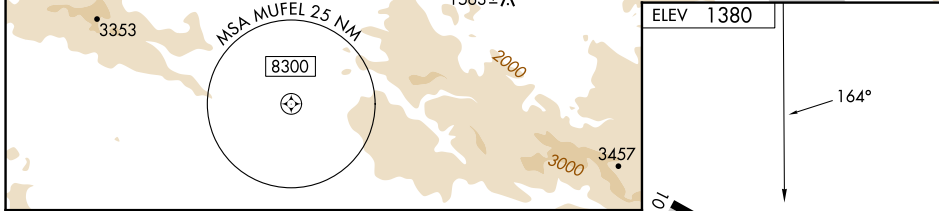
RNAV (GPS)-A

LAMPSON FLD (102)

| | | |
|--|---|---------------------------------------|
| <p>NA</p> <p>Circling NA south of Rwy 10-28. DME/DME RNP-0.3 NA. Procedure NA at night. When local altimeter setting not received, use Ukiah altimeter setting and increase all MDA 560 feet.</p> | <p>MISSED APPROACH: Climbing left turn to 8000 direct WEPLO and hold.</p> | |
| <p>AWOS-3 118.35</p> | <p>OAKLAND CENTER 127.8 353.5</p> | <p>UNICOM 122.8 (CTAF)</p> |



Procedure NA for arrivals on ENI VORTAC airway radial 320 CW 073.



| | | | | |
|----------|---------------------------|---------------------------|----|---|
| CATEGORY | A | B | C | D |
| CIRCLING | 2580-1¼ 1200 (1200-1¼) | 2580-1½ 1200 (1200-1½) | NA | |

ELEV 1380

164°

3600 X 60

0.3% UP

28

MIRL Rwy 10-28

SW-2, 19 FEB 2026 to 19 MAR 2026

SW-2, 19 FEB 2026 to 19 MAR 2026