

APP CRS <b>005°</b>	Rwy Idg TDZE Apt Elev	<b>N/A</b> <b>N/A</b> <b>1439</b>
------------------------	-----------------------------	---

# RNAV (GPS)-B

FULLER (4D8)

RNP APCH.

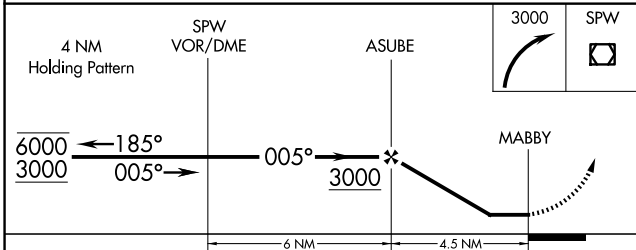
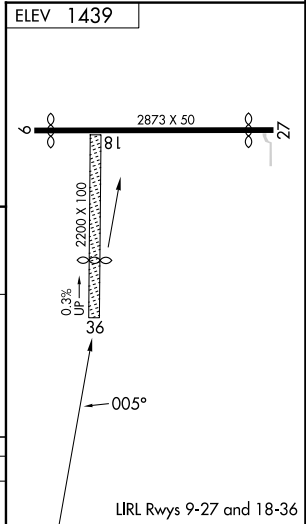
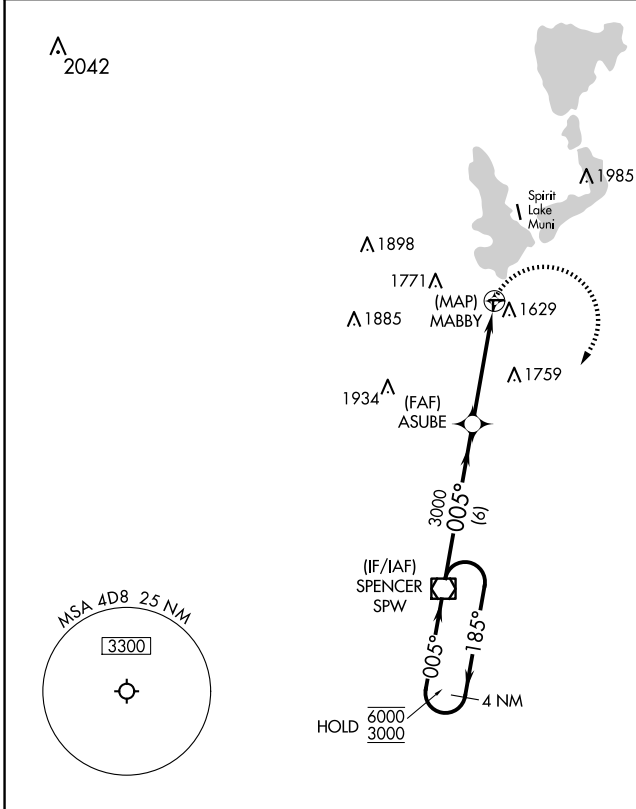
**NA** Circling NA to Rws 18 and 36. Procedure NA at night. Use Spencer altimeter setting, when not received, use Estherville altimeter setting and increase all MDA 40 feet.

MISSED APPROACH: Climbing right turn to 3000 direct SPW VOR/DME and hold.

SPW ASOS  
**126.625**

MINNEAPOLIS CENTER  
**127.75 257.7**

CTAF  
**122.9**



CATEGORY	A	B	C	D
<b>CIRCLING</b>	2100-1	661 (700-1)	NA	

# RNAV (GPS)-B

NC-3, 19 FEB 2026 to 19 MAR 2026

NC-3, 19 FEB 2026 to 19 MAR 2026