

WAAS CH <b>61341</b> <b>W07A</b>	APP CRS <b>074°</b>	Rwy Ldg TDZE Apt Elev	<b>5606</b> <b>6193</b> <b>6198</b>
--	------------------------	-----------------------------	---

# RNAV (GPS) RWY 7

CRAIG-MOFFAT (CAG)

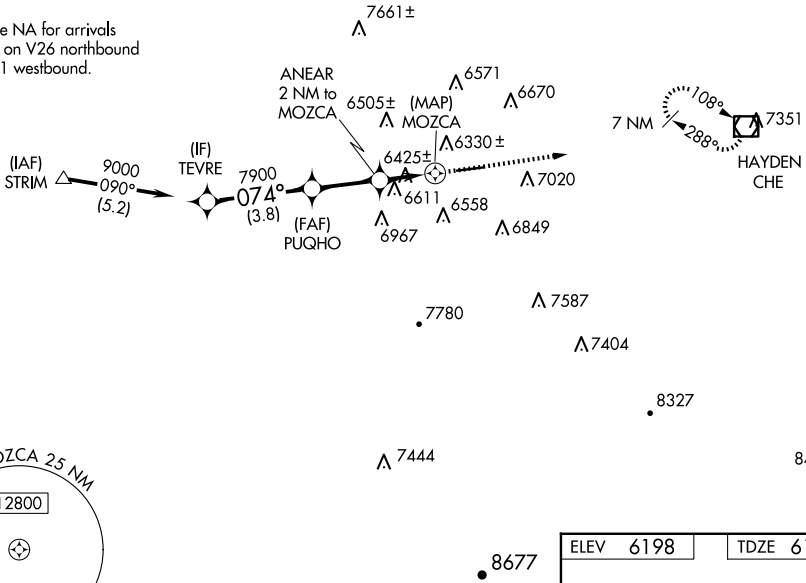
RNP APCH.

Circling NA for Cat D south of Rwy 7-25.  
 Rwy 7 helicopter visibility reduction below 3/4 SM NA.  
 Circling Rwy 25 NA at night.  
 27°C

MISSED APPROACH: Climb to 10000 direct  
 CHE VOR/DME and hold, continue climb-  
 in-hold to 10000.

ASOS <b>135.425</b>	DENVER CENTER <b>120.475 235.975</b>	UNICOM <b>122.8 (CTAF)</b>
------------------------	---	-------------------------------

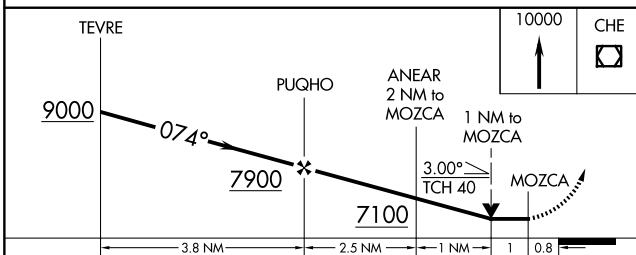
Procedure NA for arrivals at STRIM on V26 northbound and V101 westbound.



SW-1, 19 FEB 2026 to 19 MAR 2026

SW-1, 19 FEB 2026 to 19 MAR 2026

ELEV 6198	TDZE 6193
-----------	-----------



CATEGORY	A	B	C	D
LP MDA	6800-1	607 (700-1)	6800-1 3/4	607 (700-1 3/4)
LNNAV MDA	6880-1	687 (700-1)	6880-2	687 (700-2)
CIRCLING	7180-1 1/4 982 (1000-1 1/4)	7320-1 1/2 1122 (1200-1 1/2)	7720-3	1522 (1600-3)

REIL Rwys 7 and 25  
 MRL Rwy 7-25