

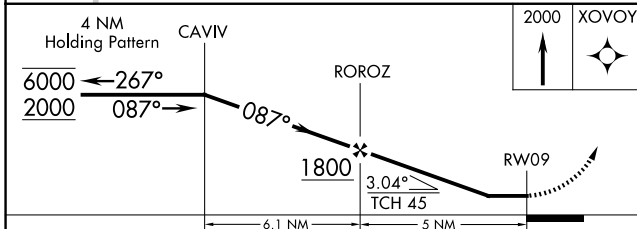
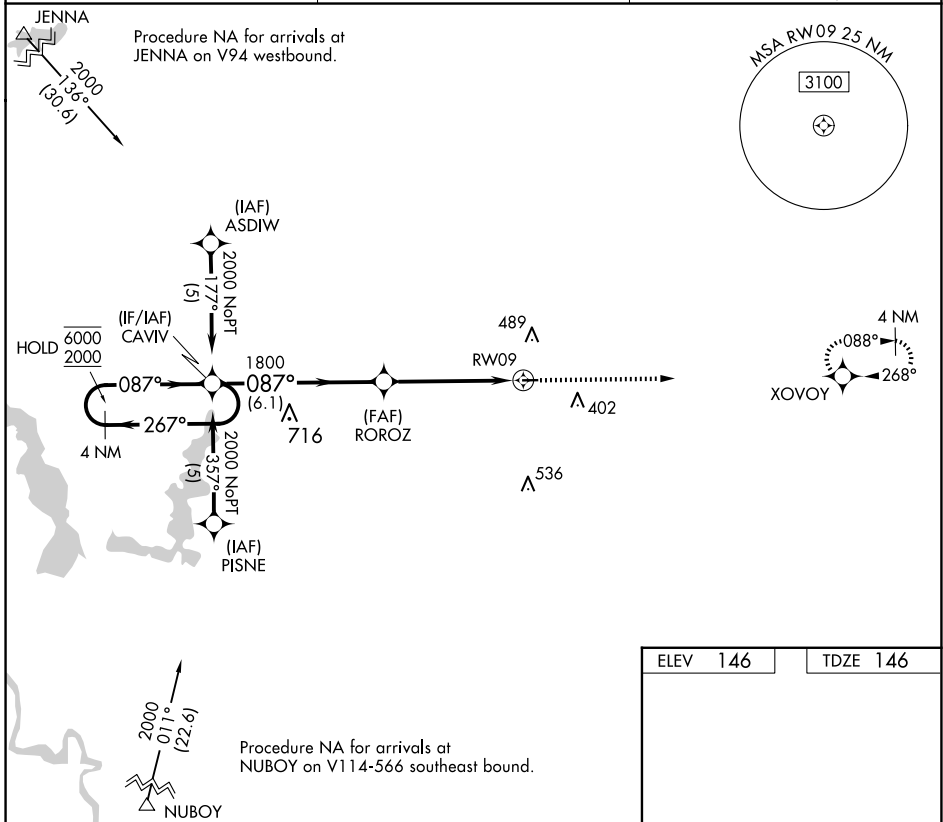
APP CRS	Rwy Idg	3002
087°	TDZE	146
	Apt Elev	146

RNAV (GPS) RWY 9

DAVID G JOYCE (ØR5)

RNP APCH - GPS.	MISSED APPROACH: Climb to 2000 direct XVOVOY and hold.
<p>NA Procedure NA at night. Rwy 9 helicopter visibility reduction below 1 SM NA. Use Alexandria Intl altimeter setting, when not received use Esler Rgnl altimeter setting.</p>	

AEX ASOS 123.975	POLK APP CON 125.4 302.2	UNICOM 122.7 (CTAF) 0
----------------------------	------------------------------------	---------------------------------



ELEV	146	TDZE	146
MIRL Rwy 9-27 0 REIL Rwy 9 and 27 0			

CATEGORY	A	B	C	D
LNAV MDA	780-1	634 (700-1)	NA	
CIRCLING	780-1 634 (700-1)	900-1 754 (800-1)	NA	

SC-4, 19 FEB 2026 to 19 MAR 2026

SC-4, 19 FEB 2026 to 19 MAR 2026