

WAAS CH 99416 W02A	APP CRS 020°	Rwy Idg TDZE Apt Elev	5002 991 996
----------------------------------------	------------------------	-----------------------------	-----------------------------------------

RNAV (GPS) RWY 2

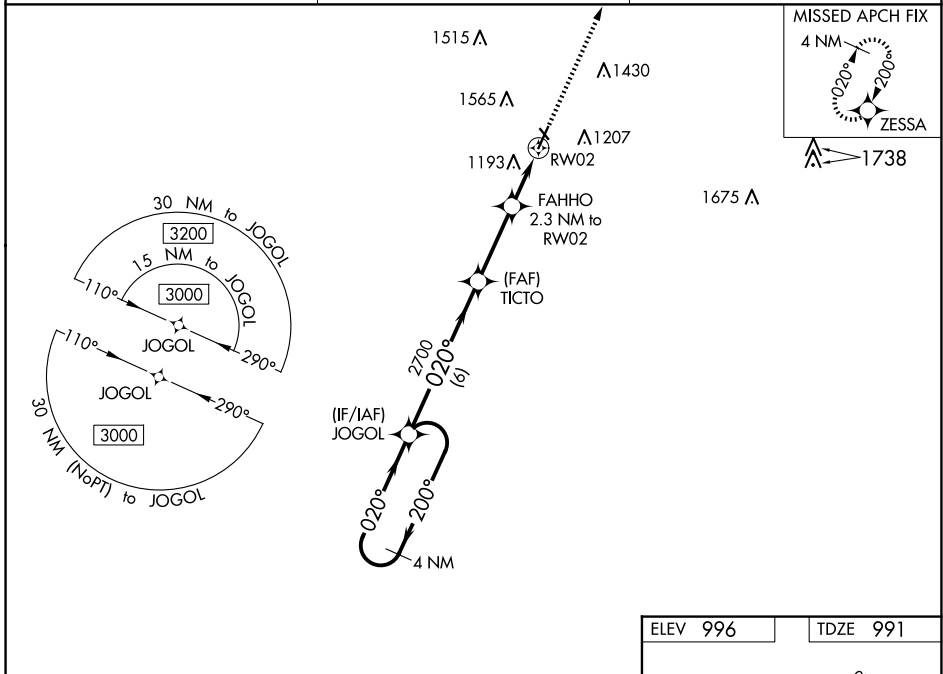
SCHENCK FLD (ICL)

RNP APCH - GPS.

▼ For uncompensated Baro-VNAV systems, LNAV/VNAV NA below -16°C (4°F) or above 54°C (130°F). Circling NA west of Rwy 2-20. Circling NA to Rwys 13 and 31. Rwy 2 helicopter visibility reduction below ¼ SM NA.

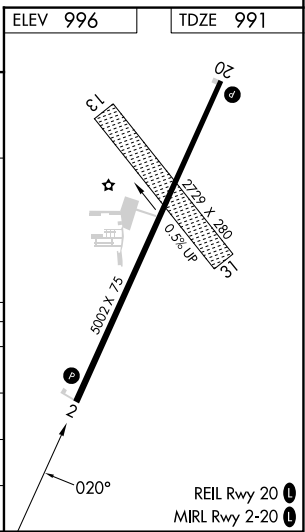
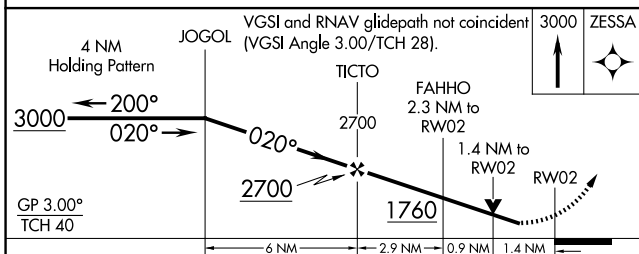
MISSED APPROACH: Climb to 3000 direct ZESSA and hold.

AWOS-3 132.025	MINNEAPOLIS CENTER 119.6 290.4	UNICOM 122.8 (CTAF)
--------------------------	------------------------------------------	-------------------------------



NC-3, 19 FEB 2026 to 19 MAR 2026

NC-3, 19 FEB 2026 to 19 MAR 2026



CATEGORY	A	B	C	D
LPV DA	1241-1 250 (300-1)			
LNAV/VNAV DA	1489-1 3/8 498 (500-1 3/8)			
LNAV MDA	1460-1	469 (500-1)	1460-1 3/8	469 (500-1 3/8)
CIRCLING	1540-1 544 (600-1)	1720-1 724 (800-1)	1780-2 1/4 784 (800-2 1/4)	1780-2 1/2 784 (800-2 1/2)