

LOC/DME I-RGL 108.5 Chan 22	APP CRS 093°	Rwy Ldg TDZE Apt Elev N/A 44
---	------------------------	---

LDA-C

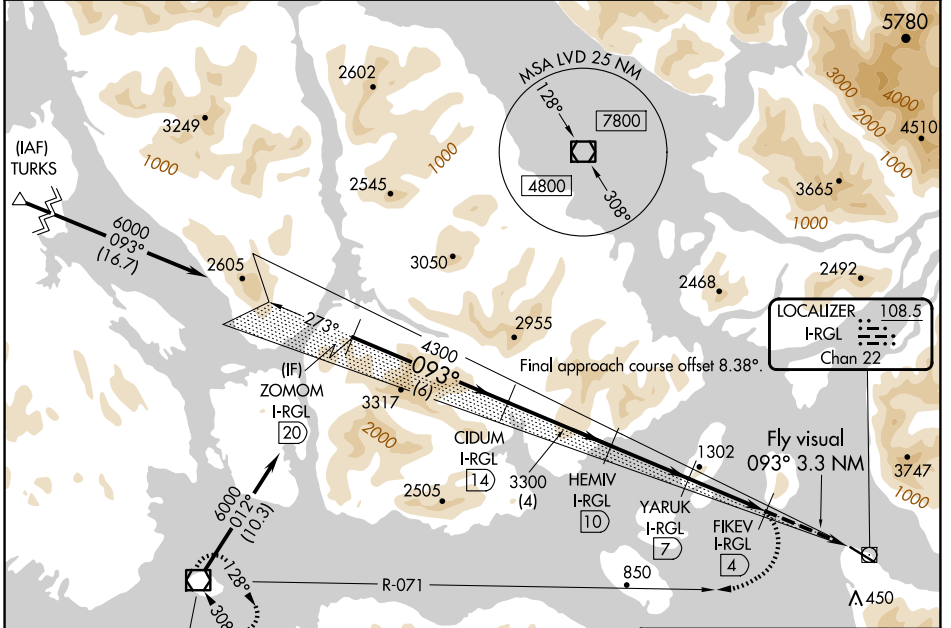
WRANGELL (WRG) (PAWG)

⚠ Circling NA south of Rwy 10-28. DME required. Any go-around commenced after passing the MAP will not provide standard obstacle clearance.

⚠ MISSED APPROACH: Immediate climbing right turn to 6000 on LVD VOR/DME R-071 to LVD VOR/DME and hold.

❄ -4°C

AWOS-3P 128.5	ANCHORAGE CENTER 118.0	SITKA RADIO 122.45	CTAF 122.6
-------------------------	----------------------------------	------------------------------	----------------------



ELEV 44

093°

0.3% Up

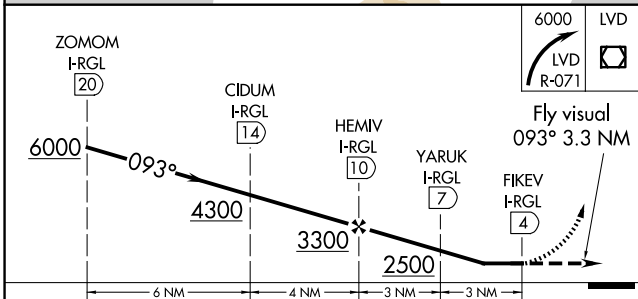
6000 X 150

321

6000 LVD

LVD R-071

Fly visual 093° 3.3 NM



CATEGORY	A	B	C	D
C CIRCLING	1560-3 1516 (1600-3)		2460-3 2416 (2500-3)	NA

REIL Rwys 10 and 28

HIRL Rwy 10-28

AK, 22 JAN 2026 to 19 MAR 2026

AK, 22 JAN 2026 to 19 MAR 2026