

|  |                        |   |
|--|------------------------|---|
| WAAS<br>CH <b>86801</b><br><b>W03A</b> | APP CRS<br><b>026°</b> | Rwy Idg <b>5502</b><br>TDZE <b>315</b><br>Apt Elev <b>315</b> |
|--|------------------------|---|

# RNAV (GPS) RWY 3

SIKESTON MEML MUNI (SIK)

RNP APCH.

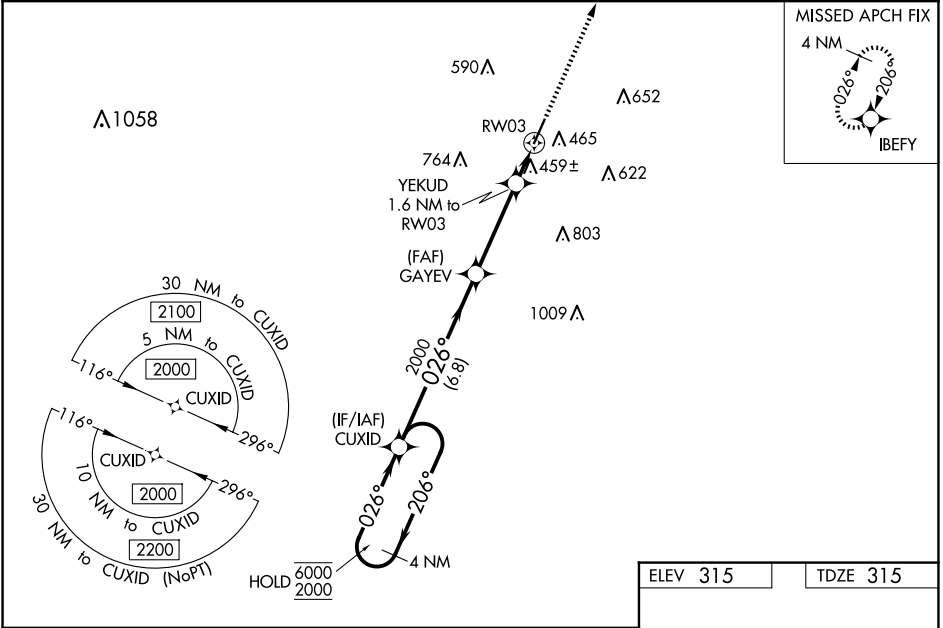
**▽** Rwy 3 helicopter visibility reduction below 3/4 SM NA. Baro-VNAV NA when using Cape Girardeau altimeter setting. For uncompensated Baro-VNAV systems, procedure NA below -15°C or above 54°C. When local altimeter setting not received, use Cape Girardeau altimeter setting and increase all DA 49 feet and all MDA 60 feet. Increase LNAV and Circling Cat C/D visibility 1/4 SM.

MISSED APPROACH: Climb to 2200 direct IBEFY and hold.

AWOS-3  
**119.175**

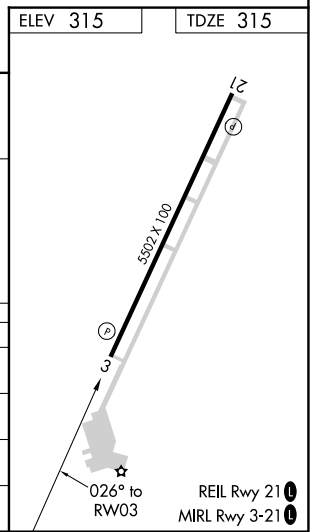
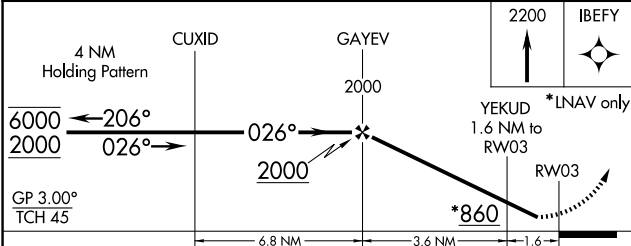
MEMPHIS CENTER  
**133.65 292.15**

UNICOM  
**122.8 (CTAF)**



NC-3, 19 FEB 2026 to 19 MAR 2026

NC-3, 19 FEB 2026 to 19 MAR 2026



| CATEGORY          | A                         | B                    | C                             | D                             |
|-------------------|---------------------------|----------------------|-------------------------------|-------------------------------|
| LPV DA            | 629-1 314 (400-1)         |                      |                               |                               |
| LNAV/VNAV DA      | 769-1 3/8 454 (500-1 3/8) |                      |                               |                               |
| LNAV MDA          | 720-1                     | 405 (500-1)          | 720-1 1/8                     | 405 (500-1 1/8)               |
| <b>C</b> CIRCLING | 840-1<br>525 (600-1)      | 860-1<br>545 (600-1) | 1080-2 1/4<br>765 (800-2 1/4) | 1160-2 3/4<br>845 (900-2 3/4) |