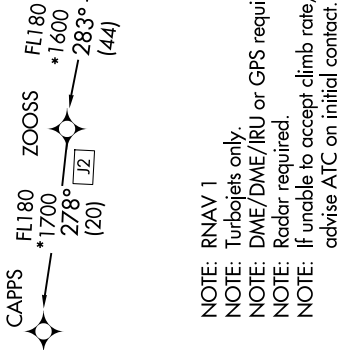


JETIN TWO DEPARTURE (RNAV)

SE-3, 19 FEB 2026 to 19 MAR 2026

D-ATIS 125.85
CLINC DEL 119.5 290.275
CPDLC
GND CON 121.9 348.6
JACKSONVILLE TOWER 118.3 317.7
JACKSONVILLE DEP CON 127.0 292.15



Expect 10000

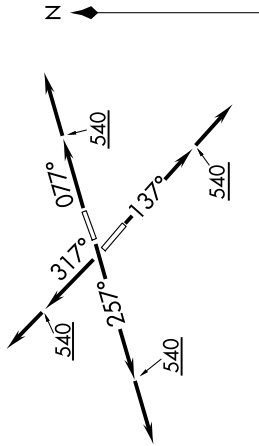
- NOTE: RNAV 1
 NOTE: Turbojets only.
 NOTE: DME/DME/IRU or GPS required.
 NOTE: Radar required.
 NOTE: If unable to accept climb rate, advise ATC on initial contact.

TAKEOFF MINIMUMS:

Rwys 8, 14, 26, 32: Standard with minimum climb of 500' per NM to 540.

NOTE: Chart not to scale.

TOP ALTITUDE:
3000



DEPARTURE ROUTE DESCRIPTION

- ▼ **TAKEOFF RUNWAY 8:** Climb heading 077° to 540, then climb to assigned altitude on heading 077° or as assigned by ATC, thence...
TAKEOFF RUNWAY 14: Climb heading 137° to 540, then climb to assigned altitude on heading 137° or as assigned by ATC, thence...
TAKEOFF RUNWAY 26: Climb heading 257° to 540, then climb to assigned altitude on heading 257° or as assigned by ATC, thence...
TAKEOFF RUNWAY 32: Climb heading 317° to 540, then climb to assigned altitude on heading 317° or as assigned by ATC, thence...
 ... expect radar vectors to DURTE, then on track 261° to JETIN. Maintain 3000 or as assigned by ATC, expect clearance to filed altitude within ten (10) minutes after departure.

CAPPS TRANSITION (JETIN2 CAPPS):
JAYJA TRANSITION (JETIN2.JAYJA):

JETIN TWO DEPARTURE (RNAV)

(JETIN2.JETIN) 08JAN15

SE-3, 19 FEB 2026 to 19 MAR 2026