

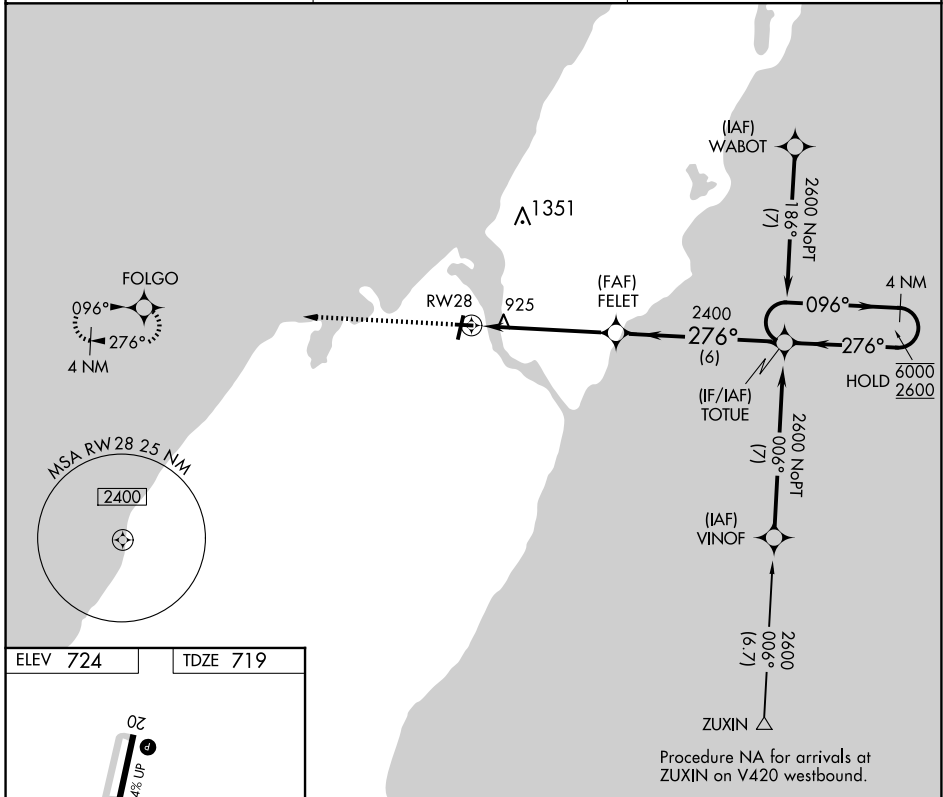
APP CRS	Rwy Idg	<b>3199</b>
<b>276°</b>	TDZE	<b>719</b>
	Apt Elev	<b>724</b>

# RNAV (GPS) RWY 28

DOOR COUNTY CHERRYLAND (SUE)

RNP APCH - GPS.	MISSED APPROACH: Climb to 2600 direct FOLGO and hold.
<b>⚠</b> Rwy 28 helicopter visibility reduction below 3/4 SM NA.	

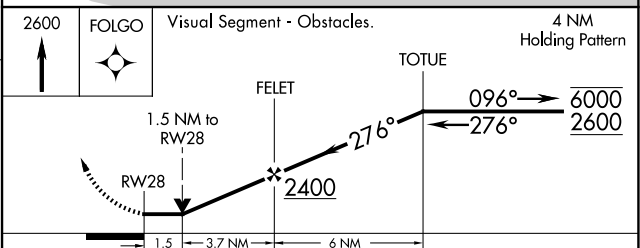
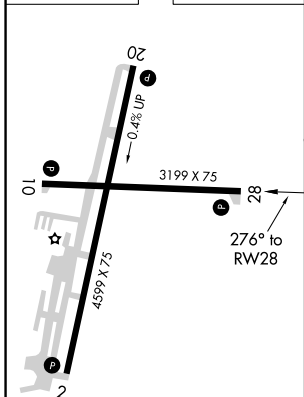
AWOS-3PT <b>128.325</b>	GREEN BAY APP CON ★ <b>119.25 338.2</b>	UNICOM <b>122.7 (CTAF) 0</b>
----------------------------	--	---------------------------------



EC-3, 19 FEB 2026 to 19 MAR 2026

EC-3, 19 FEB 2026 to 19 MAR 2026

ELEV 724	TDZE 719
----------	----------



CATEGORY	A	B	C	D
LNNAV MDA	1240-1	521 (600-1)	1240-1½ 521 (600-1½)	NA
<b>C</b> CIRCLING	1280-1	556 (600-1)	1280-1½ 556 (600-1½)	NA

RLS Rwy 2 **L**  
REIL Rwys 2, 10, 20 and 28 **L**  
MIRL Rwys 2-20 and 10-28 **L**