

LOC/DME I-HDR 111.5 Chan 52	APP CRS 316°	Rwy Idg 4600 TDZE 922 Apt Elev 934
---	------------------------	---

ILS or LOC RWY 31

BARROW COUNTY (WDR)

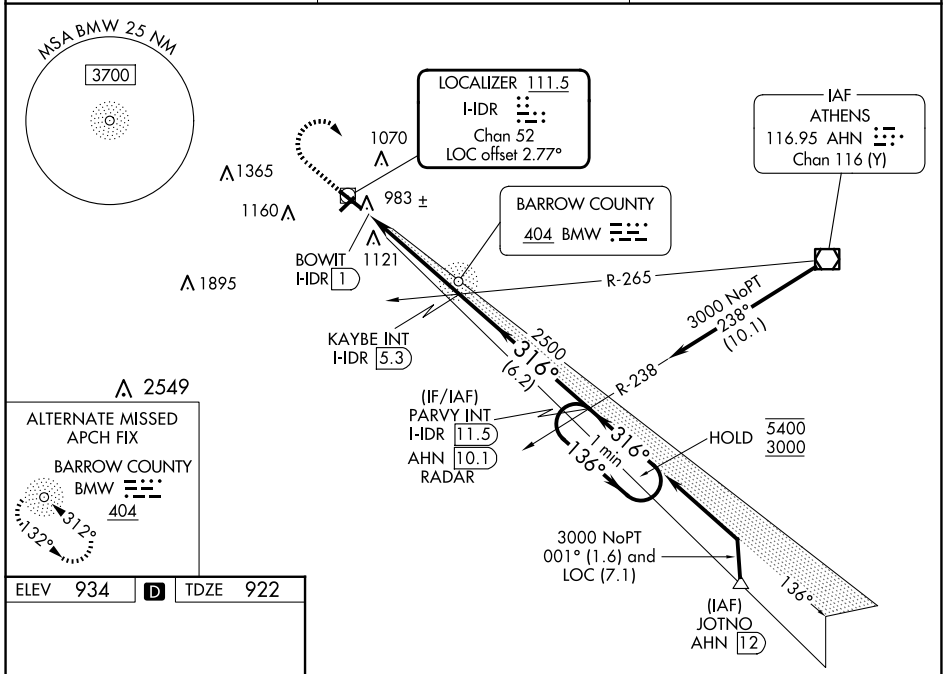
DME or RADAR required for procedure entry.

⚠ Rwy 31 helicopter visibility reduction below 3/4 SM NA. Inop table does not apply to S-ILS 31. For inop ALS, increase S-LOC 31 all Cats visibility to 1 SM. Circling Rwy 13, 23 NA at night.

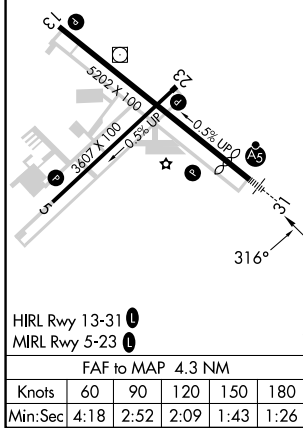
MALS
AS

MISSED APPROACH: Climb to 1500 then climbing right turn to 3000 via heading 170° and I-HDR SE course to PARVY INT/I-HDR 11.5 DME/RADAR and hold.

AWOS-3 118.575	ATLANTA APP CON * 132.475 291.1	UNICOM 123.0 (CTAF) 0
--------------------------	---	---------------------------------

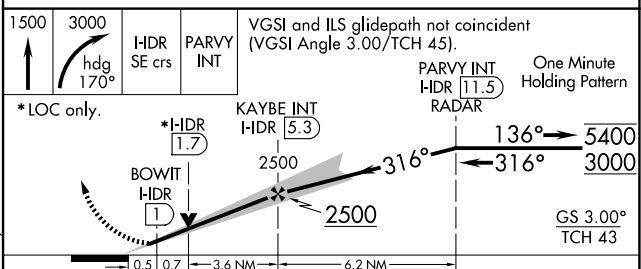


ELEV 934	D	TDZE 922
-----------------	----------	-----------------



HIRL Rwy 13-31 **0**
MIRL Rwy 5-23 **0**
FAF to MAP 4.3 NM

Knots	60	90	120	150	180
Min:Sec	4:18	2:52	2:09	1:43	1:26



CATEGORY	A	B	C	D
S-ILS 31		1172-3/4	250 (300-3/4)	
S-LOC 31		1300-3/4	378 (400-3/4)	
CIRCLING	1400-1 466 (500-1)	1580-1 646 (700-1)	1660-2 726 (800-2)	1660-2 1/4 726 (800-2 1/4)

SE-4, 19 FEB 2026 to 19 MAR 2026

SE-4, 19 FEB 2026 to 19 MAR 2026