

WAAS CH <b>69621</b> <b>W03A</b>	APP CRS <b>027°</b>	Rwy Ldg <b>7300</b> TDZE <b>1317</b> Apt Elev <b>1317</b>
--	------------------------	---

# RNAV (GPS) RWY 3

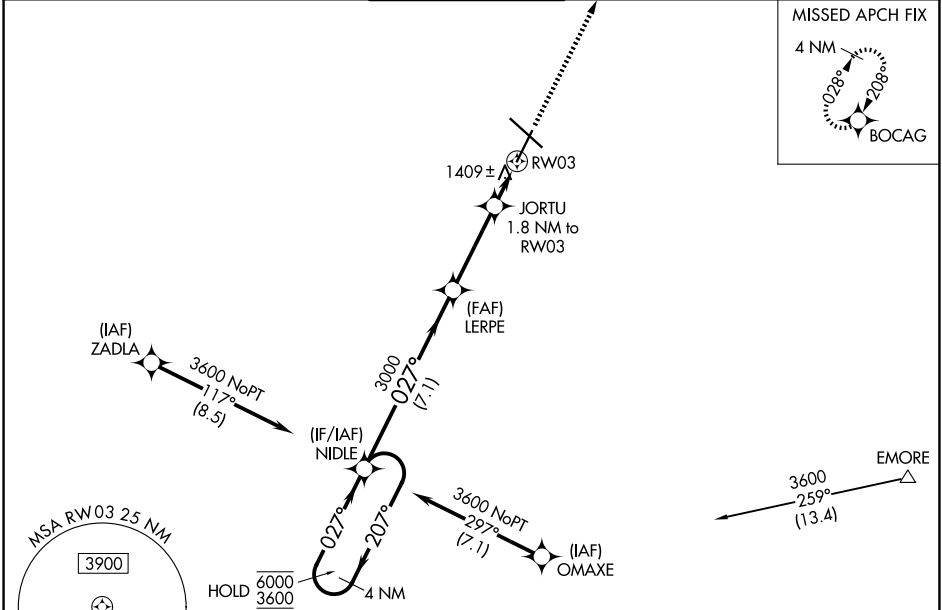
ROCHESTER INTL (RST)

RNP APCH - GPS.

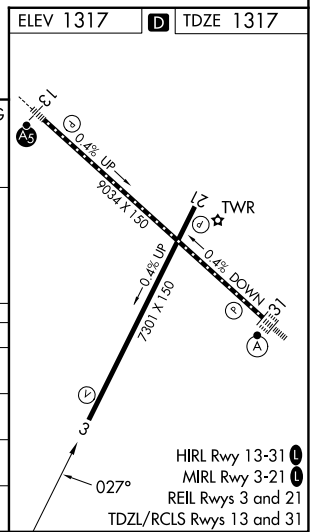
**▼** For uncompensated Baro-VNAV systems, LNAV/VNAV NA below -28°C or above 54°C.

MISSED APPROACH: Climb to 3400 direct BOCAG and hold, continue climb-in-hold to 4800.

ATIS <b>120.5</b>	ROCHESTER APP CON * <b>119.8 251.125</b>	ROCHESTER TOWER * <b>118.3 (CTAF) 257.8</b>	GND CON <b>121.9</b>	UNICOM <b>122.95</b>
----------------------	---	--	-------------------------	-------------------------



4 NM Holding Pattern		NIDLE		LERPE		JORTU 1.8 NM to RW03		3400 BOCAG	
6000 ← 207°		← 207°		027°		3000		0.9 NM to RW03	
3600 → 027°		→ 027°		→ 027°		1920		0.9 NM to RW03	
GP 3.00° TCH 47		7.1 NM		3.4 NM		0.9		0.9	
CATEGORY	A	B	C	D					
LPV DA	1567-1		250 (300-1)						
LNAV/VNAV DA	1592-1		275 (300-1)						
LNAV MDA	1660-1		343 (400-1)						
CIRCLING	1720-1 403 (500-1)	1780-1 463 (500-1)	1900-1½ 583 (600-1½)	1900-2 583 (600-2)					



NC-1, 19 FEB 2026 to 19 MAR 2026

NC-1, 19 FEB 2026 to 19 MAR 2026