

YIGO, GUAM I, GUAM

# TACAN Y RWY 24R

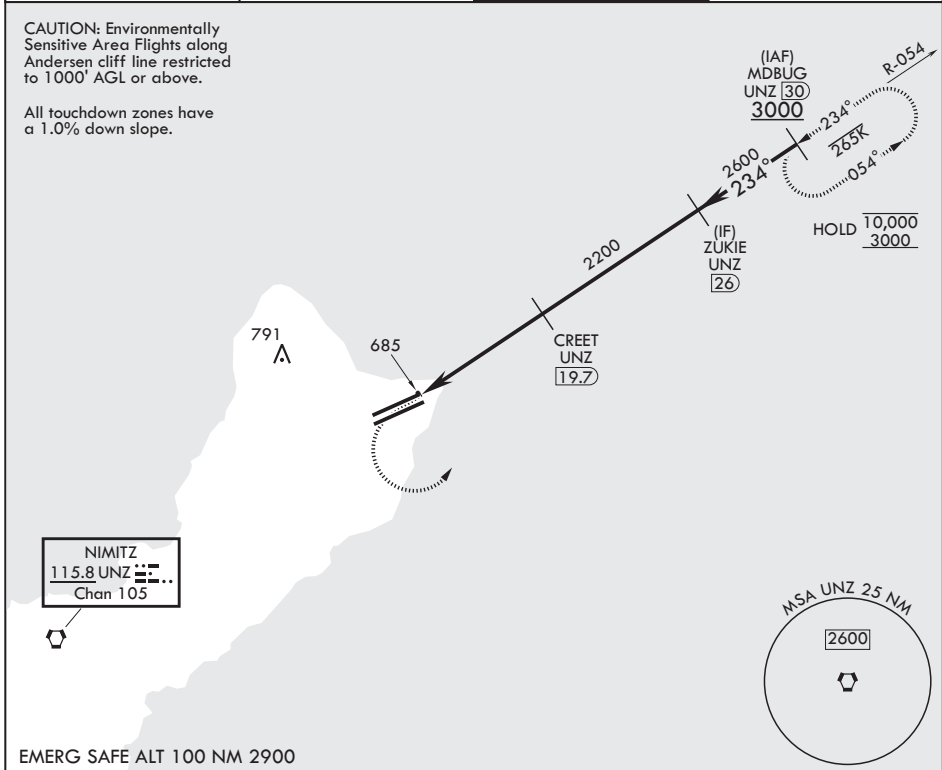
VORTAC UNZ 115.8 Chan 105	APCH CRS 234°	Rwy ldg 10,527	TDZE 617
		Arprt Elev 617	

(USAF)

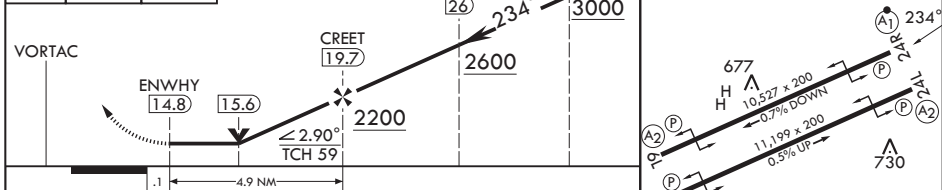
ANDERSEN AFB (PGUA)

RNAV or RADAR required for missed approach	ALSIF-1	MISSED APPROACH: Climb to 1100, then climbing left turn to intercept UNZ R-054 to MDBUG and hold.
▼ * When ALS inop increase CAT AB RVR to 55, vis to 1 mile; CAT CDE RVR to 50, vis to 1 mile. ** Circling not authorized NW of Rwy 06L-24R.		

ATIS 118.175 254.325	GUAM APP CON/DEP CON 119.8 269.0	TOWER 126.2 233.7	GND CON 121.7 275.8
-------------------------	-------------------------------------	----------------------	------------------------



1100	3000	UNZ R-054	UNZ R-054	MDBUG 30	ELEV 617	TDZE 617
------	------	-----------	-----------	----------	----------	----------



CATEGORY	A	B	C	D	E
S-24R*	940/24 323 (400-½)	323 (400-½)	940/40 323 (400-¾)	323 (400-¾)	323 (400-¾)
CIRCLING**	1060-1 443 (500-1)	1080-1 463 (500-1)	1240-1¼ 623 (700-1¼)	1240-2 623 (700-2)	1240-2¼ 623 (700-2¼)

HIRL all rwys

YIGO, GUAM I, GUAM 13°35'N - 144°56'E ANDERSEN AFB (PGUA)

Amdt 3 10AUG23  
TERPS

# TACAN Y RWY 24R

PAC, 22 JAN 2026 to 19 MAR 2026

PAC, 22 JAN 2026 to 19 MAR 2026