

YIGO, GUAM I, GUAM

# TACAN Y RWY 24L

VORTAC UNZ <b>115.8</b> Chan <b>T05</b>	APCH CRS <b>236°</b>	Rwy ldg TDZE Arprt Elev	<b>11,199</b> <b>607</b> <b>617</b>
---	-------------------------	-------------------------------	---

(USAF)

ANDERSEN AFB (PGUA)

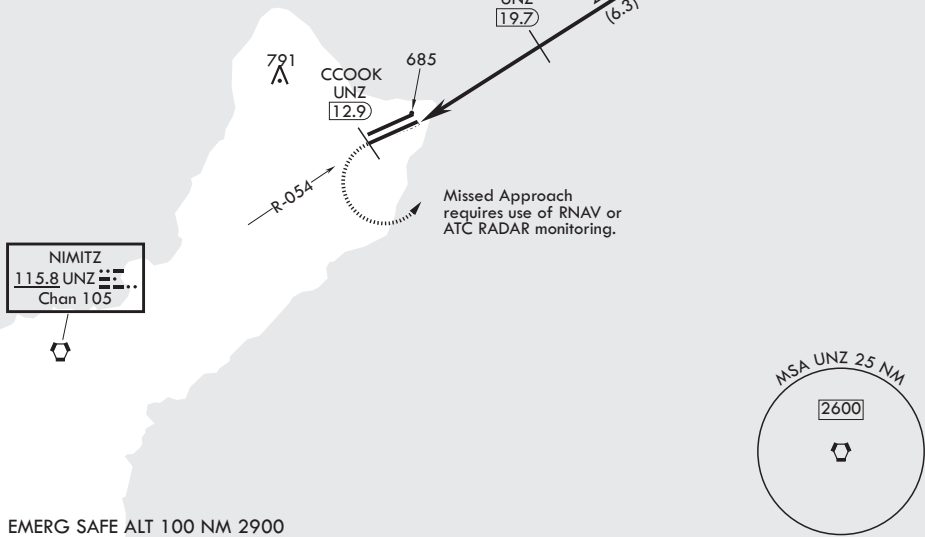
**⚠** \* When ALS inop increase CAT AB RVR to 55, vis to 1 mile; CAT CDE RVR to 50, vis to 1 mile.  
\*\* Circling not authorized NW of Rwy 06L-24R.

SALS **(A2)** MISSED APPROACH: Climb to 3000 direct CCOOK, then climbing left turn to intercept UNZ R-056 and hold.

ATIS <b>118.175 254.325</b>	GUAM APP CON/DEP CON <b>119.8 269.0</b>	TOWER <b>126.2 233.7</b>	GND CON <b>121.7 275.8</b>
--------------------------------	--	-----------------------------	-------------------------------

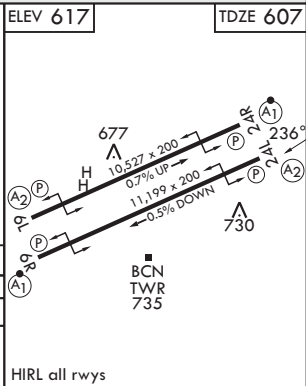
CAUTION: Environmentally Sensitive Area Flights along Andersen cliff line restricted to 1000' AGL or above.

All touchdown zones have a 1.0% down slope.



EMERG SAFE ALT 100 NM 2900

3000	CCOOK UNZ (12.9)	UNZ R-056	DWAFF UNZ (30)	ELEV 617	TDZE 607
VORTAC	WEVUS (14.8)	(15.6)	HIPRI (19.7)	TIMAE (26)	236°
			2200	2600	3000
	.1	4.9 NM			
CATEGORY	A	B	C	D	E
S-24L*	940/40	333 (400-¾)	940/45	333 (400-¾)	
CIRCLING**	1060-1 443 (500-1)	1080-1 463 (500-1)	1240-1¼ 623 (700-1¼)	1240-2 623 (700-2)	1240-2¼ 623 (700-2¼)
	HIRL all rwys				



PAC, 22 JAN 2026 to 19 MAR 2026

PAC, 22 JAN 2026 to 19 MAR 2026

YIGO, GUAM I, GUAM

13°35'N - 144°56'E

ANDERSEN AFB (PGUA)

Amdt 2 17JUN21  
TERPS

# TACAN Y RWY 24L