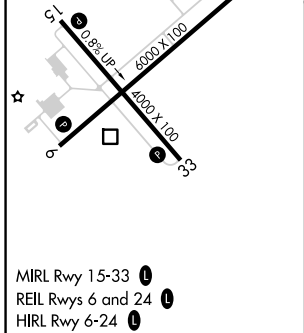
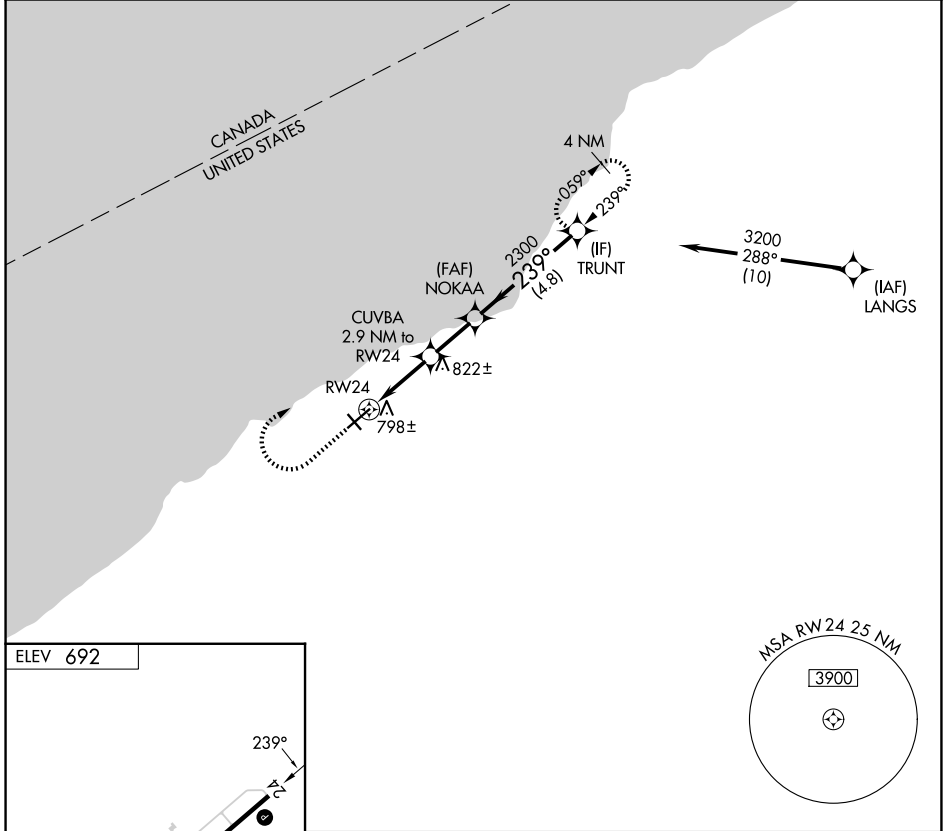


APP CRS	Rwy Ldg	N/A
239°	TDZE	N/A
	Apt Elev	692

RNAV (GPS)-A

CHAUTAUGUA COUNTY/DUNKIRK (DKK)

RNP APCH - GPS.		MISSED APPROACH: Climb to 1900 then climbing right turn to 3200 direct TRUNT and hold.
<p>V Circling Cat D NA southeast of Rwy 6 and southwest of Rwy 33.</p> <p>A Circling Rwy 6, 24, 33 NA at night.</p> <p>W -21°C Rwy 6, 24, 33 helicopter visibility reduction below 1 SM NA.</p>	<p>ASOS 119.275</p> <p>BUFFALO APP CON 126.5 317.6</p> <p>UNICOM 123.075 (CTAF) 0</p>	



1900	3200	TRUNT	Visual Segment - Obstacles.	
RW24		CUVBA 2.9 NM to RW24	NOKAA	TRUNT
1440		2300	239°	3200
← 2.9 NM →		← 2.1 NM →	← 4.8 NM →	
CATEGORY	A	B	C	D
CIRCLING	1200-1 508 (600-1)	1320-1 628 (700-1)	1640-2¾ 948 (1000-2¾)	2140-3 1448 (1500-3)

NE-2, 19 FEB 2026 to 19 MAR 2026

NE-2, 19 FEB 2026 to 19 MAR 2026