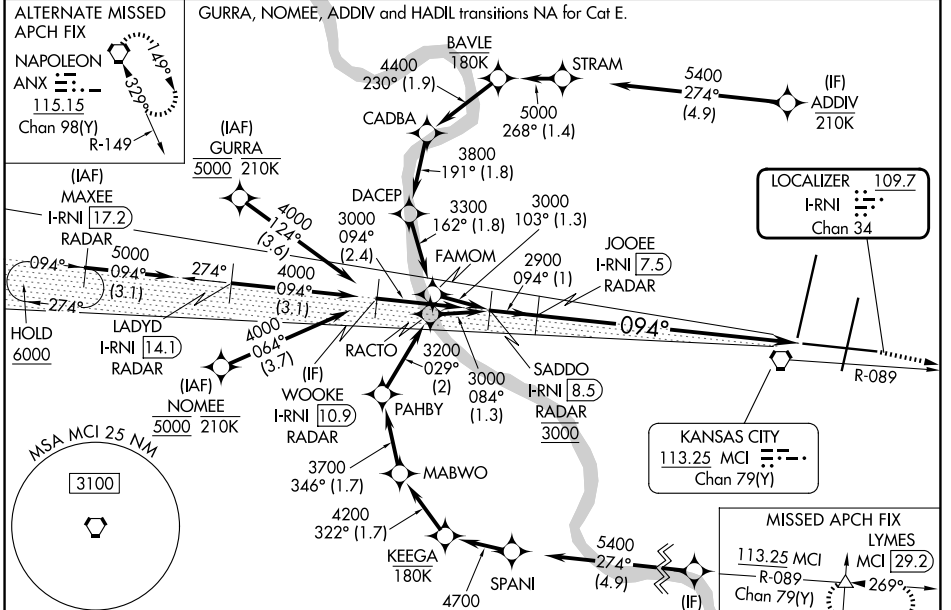


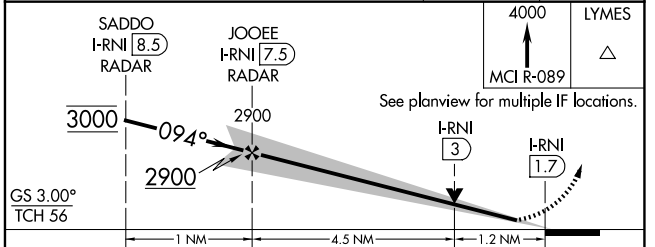
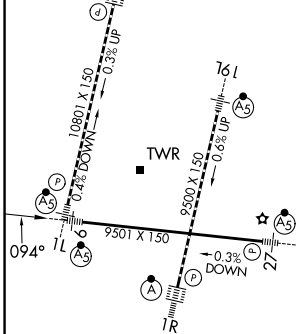
LOC/DME I-RNI <b>109.7</b> Chan <b>34</b>	APP CRS <b>094°</b>	Rwy Ldg TDZE Apt Elev <b>9501</b> <b>1016</b> <b>1027</b>
---	------------------------	--

**ILS or LOC RWY 9**  
KANSAS CITY INTL (MCI)

RNP APCH-GPS. From GURRA or NOMEIE or ADDIV or HADIL.		MALSR 	MISSED APPROACH: Climb to 4000 on MCI R-089 to LYMES INT/MCI 29.2 DME and hold.		
DME or RADAR required. RADAR required for procedure entry at MAXEE.					
<p><b>▼</b> Inop table does not apply to S-ILS 9. For inop ALS, increase S-LOC 9 Cats A/B visibility to RVR 5500 and S-LOC 9 Cat E visibility to 1 3/8 SM.</p>					
D-ATIS <b>128.375</b>	KANSAS CITY APP CON <b>120.95 318.1</b>	INTERNATIONAL TOWER <b>128.2 254.25</b>	GND CON <b>121.8</b>	CLNC DEL <b>135.7</b>	CPDLC



ELEV 1027	TDZE 1016
TDZ/CL Rwy 1L, 1R, 19L and 19R	HIRL all Rwy 5



FAF to MAP 5.7 NM					
Knots	60	90	120	150	180
Min:Sec	5:42	3:48	2:51	2:17	1:54

CATEGORY	A	B	C	D	E
S-ILS 9	1266/40 250 (300-3/4)				
S-LOC 9	1460/40	444 (500-3/4)	1460/45 444 (500-7/8)		
CIRCLING	1540-1	513 (600-1)	1540-1 1/2	1580-2	553 (600-2)

NC-3, 19 FEB 2026 to 19 MAR 2026

NC-3, 19 FEB 2026 to 19 MAR 2026