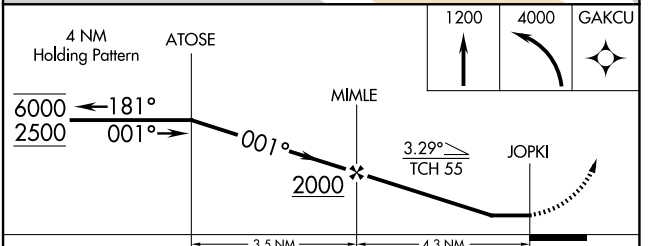
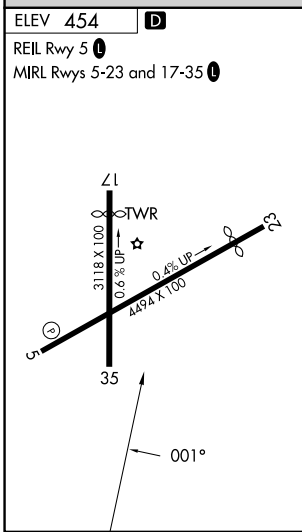
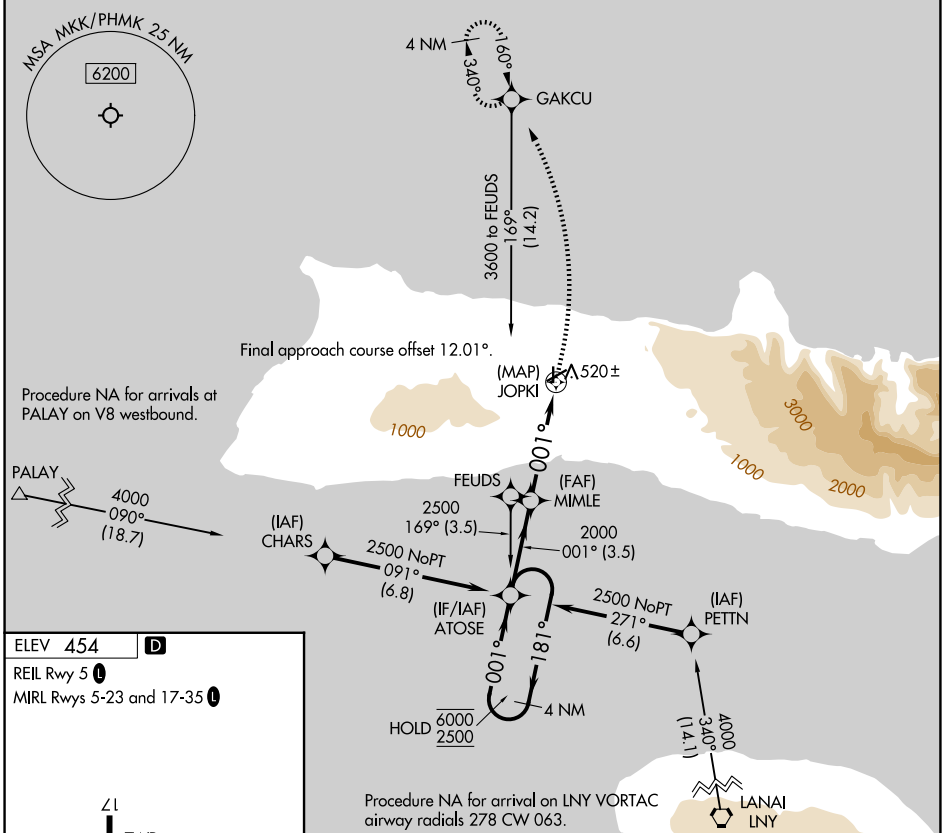


APP CRS	Rwy Ldg	N/A
001°	TDZE	N/A
	Apt Elev	454

RNAV (GPS)-B

MOLOKAI (MKK)(PHMK)

RNP APCH.		MISSED APPROACH: Climb to 1200 then climbing left turn 4000 direct GAKCU and hold, continue climb-in-hold to 4000.	
<p>▼ Circling to Rwy 17, 23 NA at night.</p> <p>▲ Circling NA east of Rwy 35 and southeast of Rwy 23.</p>	<p>ATIS</p> <p>128.2</p>	<p>HCF CENTER</p> <p>124.1 317.5</p>	<p>MOLOKAI TOWER ★</p> <p>125.7 (CTAF) 306.2</p>
		GND CON	
		121.9	



CATEGORY	A	B	C	D
CIRCLING	980-1 526 (600-1)	1100-1 646 (700-1)	1640-3 1186 (1200-3)	1920-3 1466 (1500-3)