

(SYMIN.SYMIN1) 20030

SYMIN ONE ARRIVAL (RNAV)

AL-754 (FAA)

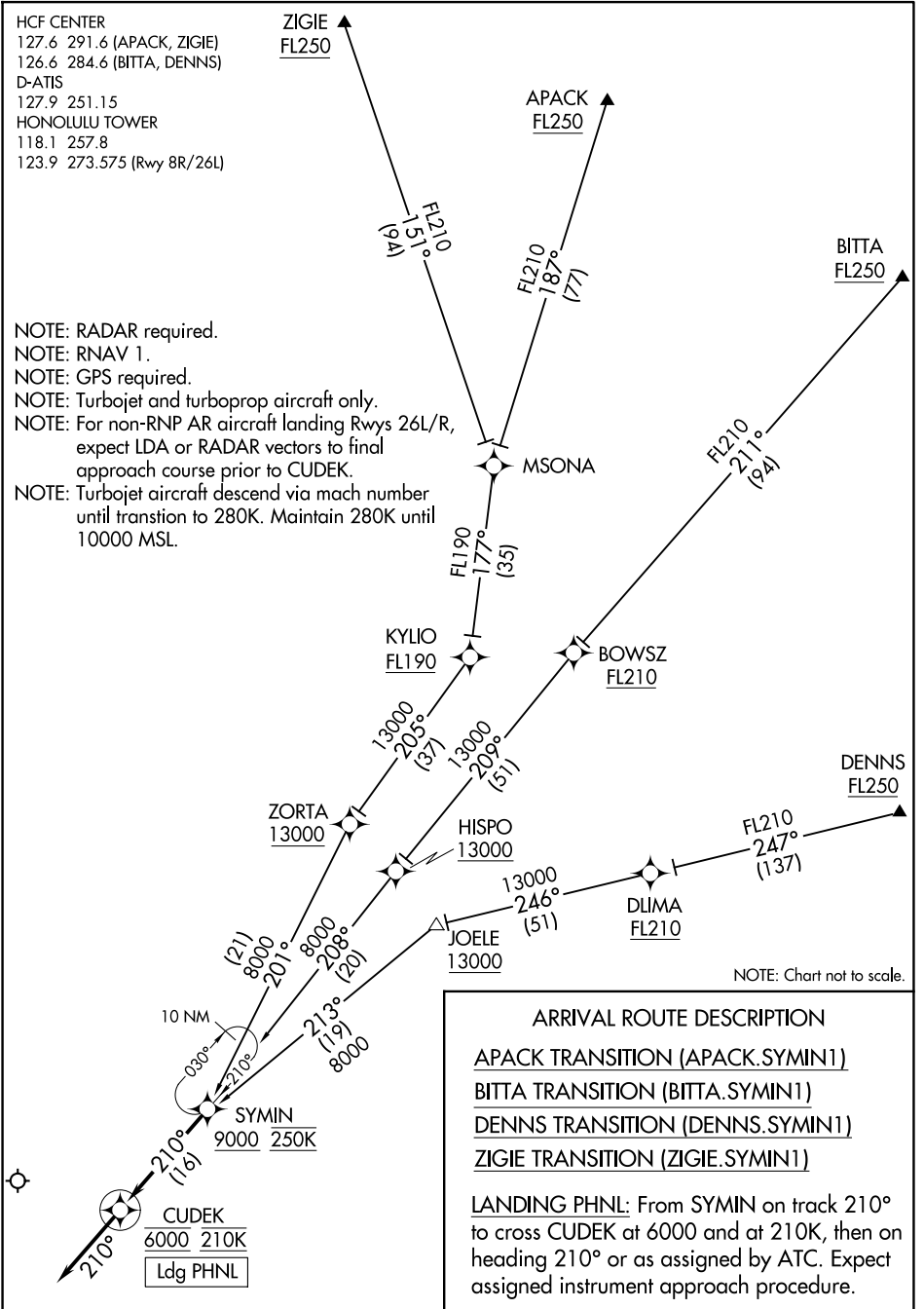
DANIEL K INOUYE INTL (HNL) (PHNL)
HONOLULU, HAWAII

HCF CENTER
127.6 291.6 (APACK, ZIGIE)
126.6 284.6 (BITTA, DENNS)
D-ATIS
127.9 251.15
HONOLULU TOWER
118.1 257.8
123.9 273.575 (Rwy 8R/26L)

- NOTE: RADAR required.
- NOTE: RNAV 1.
- NOTE: GPS required.
- NOTE: Turbojet and turboprop aircraft only.
- NOTE: For non-RNP AR aircraft landing Rwy 26L/R, expect LDA or RADAR vectors to final approach course prior to CUDEK.
- NOTE: Turbojet aircraft descend via mach number until transtion to 280K. Maintain 280K until 10000 MSL.

PAC, 22 JAN 2026 to 19 MAR 2026

PAC, 22 JAN 2026 to 19 MAR 2026



SYMIN ONE ARRIVAL (RNAV)

(SYMIN.SYMIN1) 30JAN20

HONOLULU, HAWAII
DANIEL K INOUYE INTL (HNL) (PHNL)