

# TACAN Y RWY 33

TACAN WRB Chan <b>10</b>	APCH CRS <b>327°</b>	Rwy ldg <b>12,001</b> TDZE <b>275</b> Arprt Elev <b>294</b>
-----------------------------	-------------------------	---

[USAF]

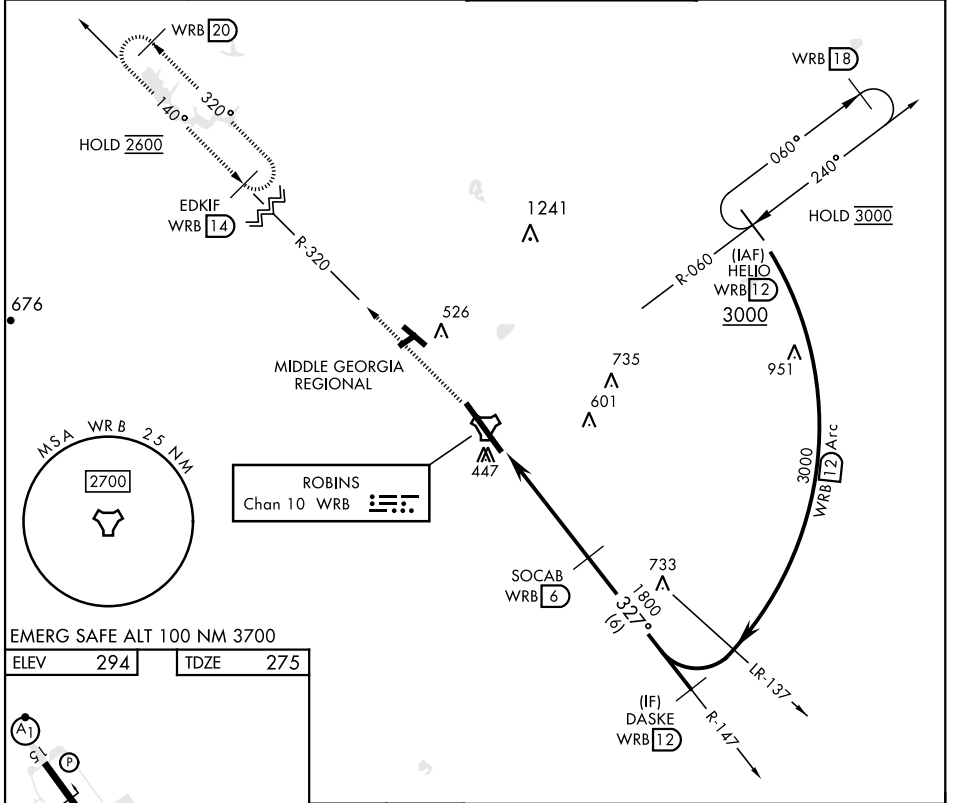
ROBINS AFB (KWRB)

\* When ALS inop, increase CAT AB RVR to 55, vis to 1 mile; CAT CDE vis to 1 3/8 miles.  
 \*\* Circling not authorized SW of Rwy 15-33.



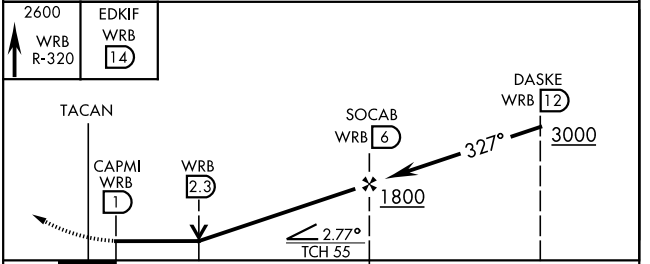
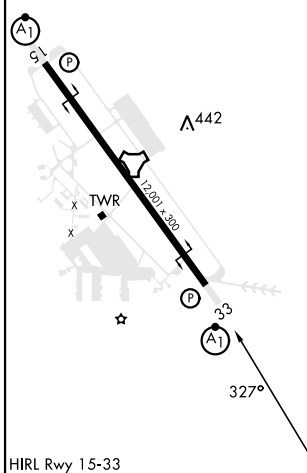
MISSED APPROACH: Climb To 2600 on WRB TACAN R-320 to EDKIF and hold.

ATIS <b>119.475 273.475</b>	ATLANTA APP CON <b>124.2 279.6</b>	TOWER <b>133.225 257.975</b>	GND CON <b>121.85 275.8</b>
--------------------------------	---------------------------------------	---------------------------------	--------------------------------



EMERG SAFE ALT 100 NM 3700

ELEV	294	TDZE	275
------	-----	------	-----



CATEGORY	A	B	C	D	E
S-33*	720/24	445 (500-1/2)	720/45	445	(500-3/8)
<b>C</b> CIRCLING**	780-1	486 (500-1)	880-1 1/2 586 (600-1 1/2)	960-2 666 (700-2)	1040-2 3/4 746 (800-2 3/4)

# TACAN Y RWY 33

SE-4, 19 FEB 2026 to 19 MAR 2026

SE-4, 19 FEB 2026 to 19 MAR 2026