

TUCSON, ARIZONA

TACAN Y RWY 13

DAVIS-MONTHAN AFB (KDMA)

TACAN DMA Chan 123	APCH CRS 133°	Rwy Idg 13,645 TDZE 2615 Arprt Elev 2704
------------------------------	-------------------------	---

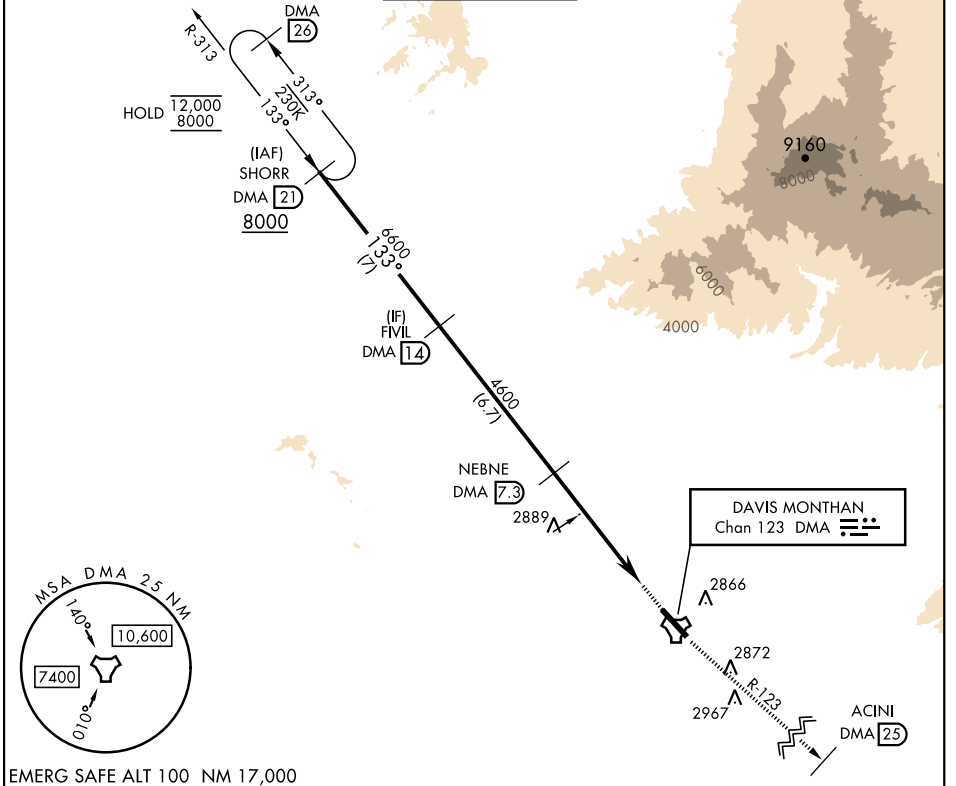
[USAF]

RNAV or RADAR required.

MISSED APPROACH: Climb to 8000 intercept DMA TACAN R-123 to ACINI. Expect RADAR vectors.

* Circling not authorized SW of Rwy 13-31.

ATIS★ 132.3 270.1	TUCSON APP CON 066°-274° 119.4 318.1 275°-065° 125.1 269.55	TOWER 118.85 253.5	GND CON 121.8 275.8	CLNC DEL 121.8 275.8
-----------------------------	---	------------------------------	-------------------------------	--------------------------------



EMERG SAFE ALT 100 NM 17,000

SHORR DMA (21) 8000	FIVIL DMA (14) 6600	NEBNE DMA (7.3) 4600	DMA (3.1) 3160	ESALE DMA (2) 545	DMA TACAN	ELEV 2704	TDZE 2615
8000		6600		4600		8000 DMA R-123	
133°		3.17°		TCH 58		ACINI DMA (25)	
5.3 NM		0.5 NM				DAVIS MONTHAN Chan 123 DMA	
CATEGORY	A	B	C	D	E		
S-13	3160/55 545 (500-1)		3160-1½ 545 (500-1½)				
CIRCLING*	3200-1 496 (500-1)	3220-1 516 (600-1)	3280-1½ 576 (600-1½)	3420-2¼ 716 (800-2¼)	3460-2¾ 756 (800-2¾)	HIRL Rwy 13-31 REIL Rwy 13	

TUCSON, ARIZONA 32°10'N-110°53'W DAVIS-MONTHAN AFB (KDMA)

Orig 28NOV24

TACAN Y RWY 13

SW-4, 19 FEB 2026 to 19 MAR 2026

SW-4, 19 FEB 2026 to 19 MAR 2026