

TOP ALTITUDE:
5000

(READE7, READE) 241.09
READE SEVEN DEPARTURE

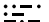
AL-347 (FAA)

RICHMOND INTL (RIC)
RICHMOND, VIRGINIA

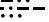
ATIS 119.15 263.025
CLNC DEL
127.55 348.6
GND CON
121.9 348.6
RICHMOND TOWER
121.1 257.8
POTOMAC DEP CON
126.75 307.2

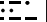
MONTEBELLO
115.3 MOL 
Chan 100

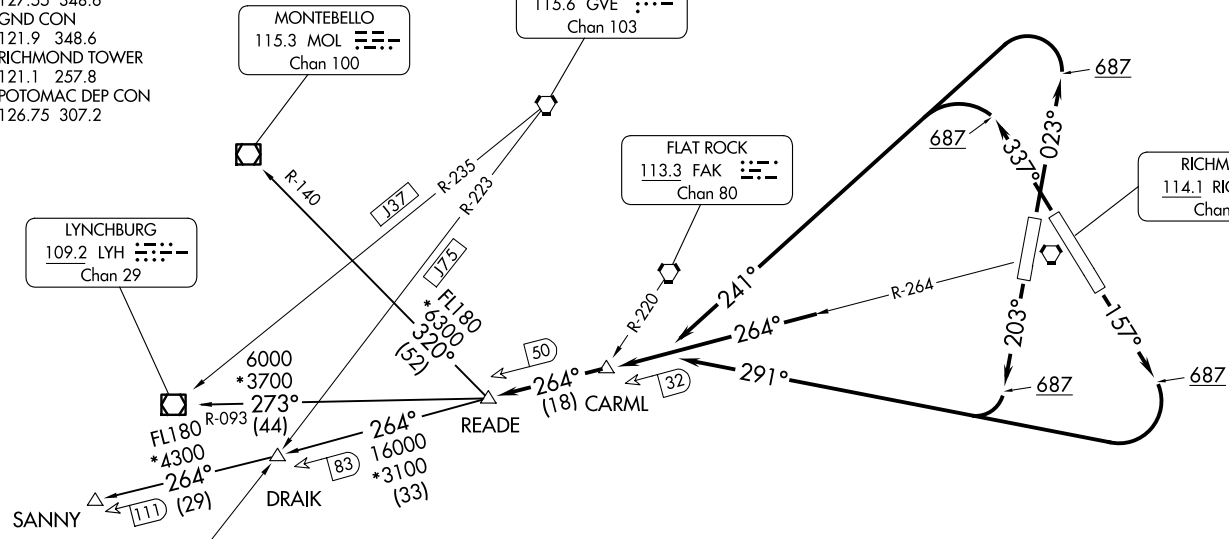
GORDONSVILLE
115.6 GVE 
Chan 103

FLAT ROCK
113.3 FAK 
Chan 80

RICHMOND
114.1 RIC 
Chan 88

LYNCHBURG
109.2 LYH 
Chan 29

GREENSBORO
116.2 GSO 
Chan 109



NOTE: DME required.

TAKEOFF MINIMUMS

Rwys 2, 16, 20, 34: Standard with minimum climb of 500' per NM to 687.

(NARRATIVE ON FOLLOWING PAGE)

NOTE: Chart not to scale.

READE SEVEN DEPARTURE
(READE7, READE) 05DEC19

RICHMOND VIRGINIA
RICHMOND INTL (RIC)

READE SEVEN DEPARTURE



DEPARTURE ROUTE DESCRIPTION

TAKEOFF RUNWAY 2: Climb heading 023° to 687, then climbing left turn heading 241°, thence

TAKEOFF RUNWAY 16: Climb heading 157° to 687, then climbing right turn heading 291°, thence

TAKEOFF RUNWAY 20: Climb heading 203° to 687, then climbing right turn heading 291°, thence

TAKEOFF RUNWAY 34: Climb heading 337° to 687, then climbing left turn heading 241°, thence

. . . . intercept RIC VORTAC R-264 to CARML INT/RIC 32 DME, then on RIC VORTAC R-264 to READE INT/RIC 50 DME, then on assigned transition, maintain 5000. Expect filed altitude within ten minutes after departure.

DRAIK TRANSITION (READE7.DRAIK): From over READE INT/RIC 50 DME on RIC R-264 to DRAIK INT.

LYNCHBURG TRANSITION (READE7.LYH): From over READE INT/RIC 50 DME on LYH R-093 to LYH VOR/DME.

MONTEBELLO TRANSITION (READE7.MOL): From over READE INT/RIC 50 DME on MOL R-140 to MOL VOR/DME.

SANNY TRANSITION (READE7.SANNY): From over READE INT/RIC 50 DME on RIC R-264 to SANNY.

NE-3, 19 FEB 2026 to 19 MAR 2026

NE-3, 19 FEB 2026 to 19 MAR 2026