

# PCIFC THREE ARRIVAL (RNAV) Transition Routes

LONG BEACH (DAUGHERTY FLD) (LGB)  
LONG BEACH, CALIFORNIA

RNAV 1 - DME/DME/IRU or GPS.

RADAR required.

SOCAL APP CON

127.4 263.025

ATIS

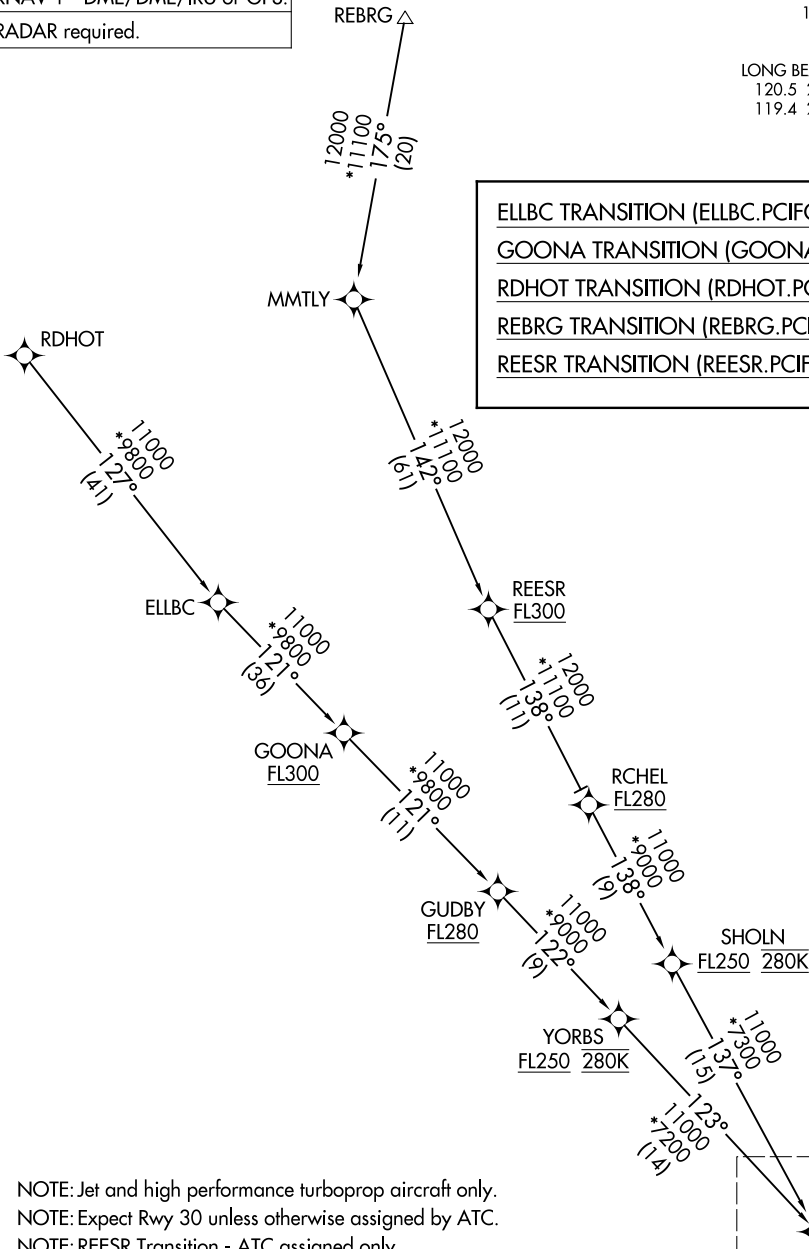
127.75

LONG BEACH TOWER\*

120.5 257.6 (Rwy 12)

119.4 257.6 (Rwy 30)

- ELLBC TRANSITION (ELLBC.PCIFC3)
- GOONA TRANSITION (GOONA.PCIFC3)
- RDHOT TRANSITION (RDHOT.PCIFC3)
- REBRG TRANSITION (REBRG.PCIFC3)
- REESR TRANSITION (REESR.PCIFC3)



SW-3, 19 FEB 2026 to 19 MAR 2026

SW-3, 19 FEB 2026 to 19 MAR 2026

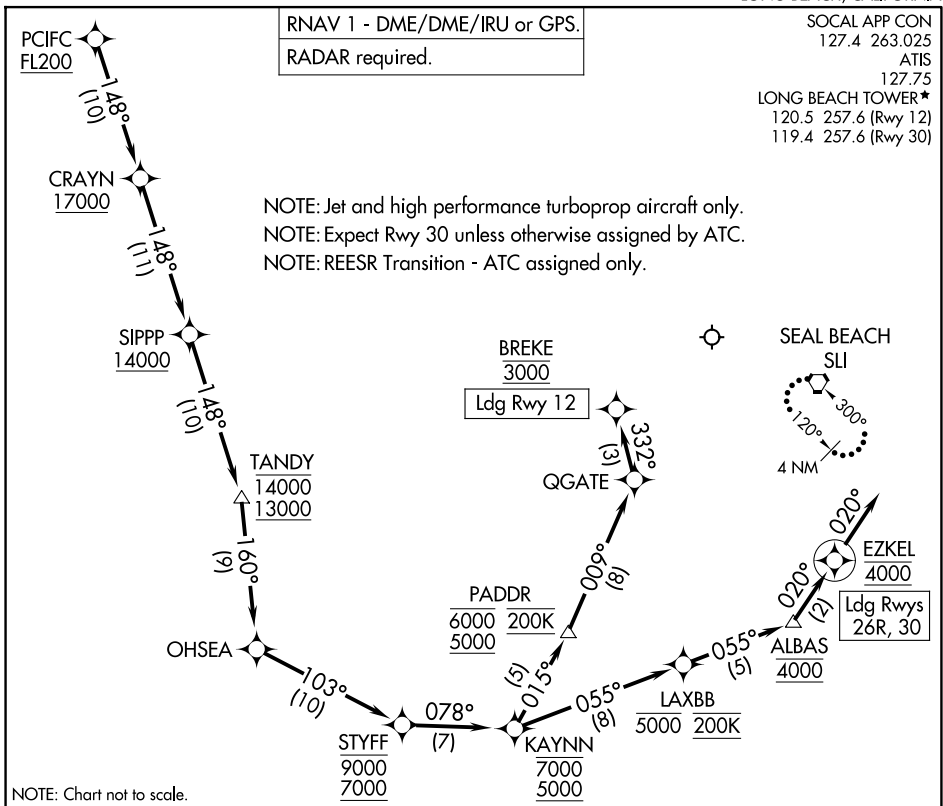
NOTE: Jet and high performance turboprop aircraft only.  
 NOTE: Expect Rwy 30 unless otherwise assigned by ATC.  
 NOTE: REESR Transition - ATC assigned only.

(CONTINUED ON FOLLOWING PAGE)

NOTE: Chart not to scale.

See following page for Arrival Routes.

# PCIFC THREE ARRIVAL (RNAV) Arrival Routes



NOTE: Chart not to scale.

## ARRIVAL ROUTE DESCRIPTION

From PCIFC on track 148° to cross CRAYN at or above 17000, then on track 148° to cross SIPPP at or above 14000, then on track 148° to cross TANDY between 13000 and 14000, then on track 160° to OHSEA, then on track 103° to cross STYFF between 7000 and 9000.

**LANDING RUNWAY 12:** From STYFF on track 078° to cross KAYNN between 5000 and 7000, then on track 015° to cross PADDR between 5000 and 6000 and at 200K, then on track 009° to QGATE, then on track 332° to cross BREKE at 3000. Expect RNAV (RNP) RWY 12 approach.

**LANDING RUNWAYS 26R, 30:** From STYFF on track 078° to cross KAYNN between 5000 and 7000, then on track 055° to cross LAXBB at or below 5000 and at 200K, then on track 055° to cross ALBAS at 4000, then on track 020° to cross EZKEL at 4000, then on track 020°. Expect RNAV (RNP) Y RWY 30 or RADAR vectors to final approach course.

### LOST COMMUNICATIONS

**LANDING RUNWAY 12:** After BREKE proceed on the RNAV (RNP) RWY 12 approach.

**LANDING RUNWAYS 26R, 30:** After EZKEL proceed on the RNAV (RNP) Y RWY 30 or ILS or LOC RWY 30 approach.

If unable approach to LGB, after EZKEL/BREKE climb to 4000 direct SLI VORTAC and hold.

# PCIFC THREE ARRIVAL (RNAV) Arrival Routes

SW-3, 19 FEB 2026 to 19 MAR 2026

SW-3, 19 FEB 2026 to 19 MAR 2026